

Noise Abatement Subcommittee

Review of Noise Complaint Activity

APRIL 23, 2015

Madison, Wisconsin



AIRCRAFT MOVEMENTS

OCT 14 – MAR 15

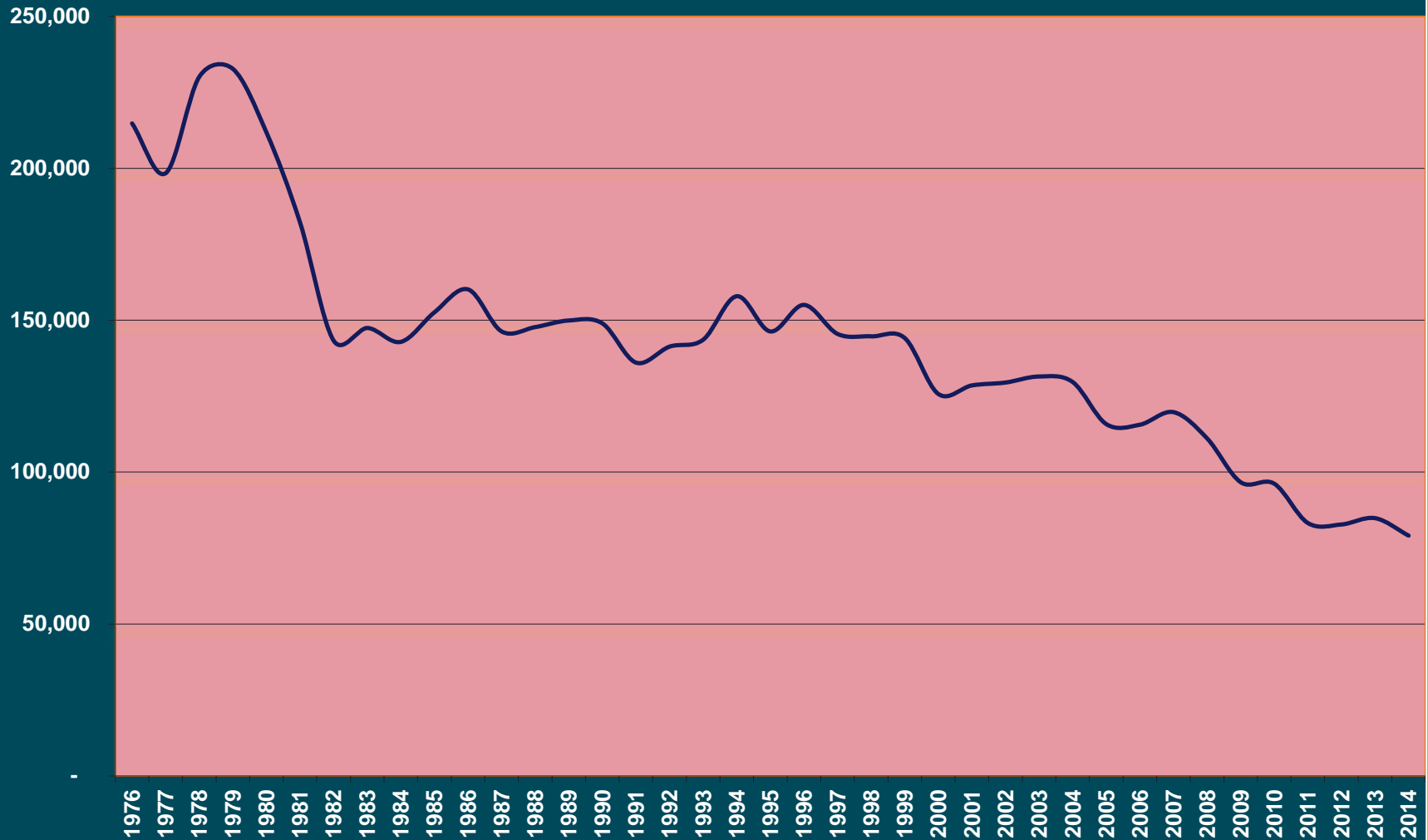
2

Aircraft Movements	OCT 14 – MAR 15	OCT 13 – MAR 14	% Change
<i>Air Carrier</i>	15,807	16,463	-4%
<i>Military</i>	2,163	2,208	-2%
<i>General Aviation</i>	18,442	19,401	-5%
<i>Total Movements</i>	36,412	38,072	-4%

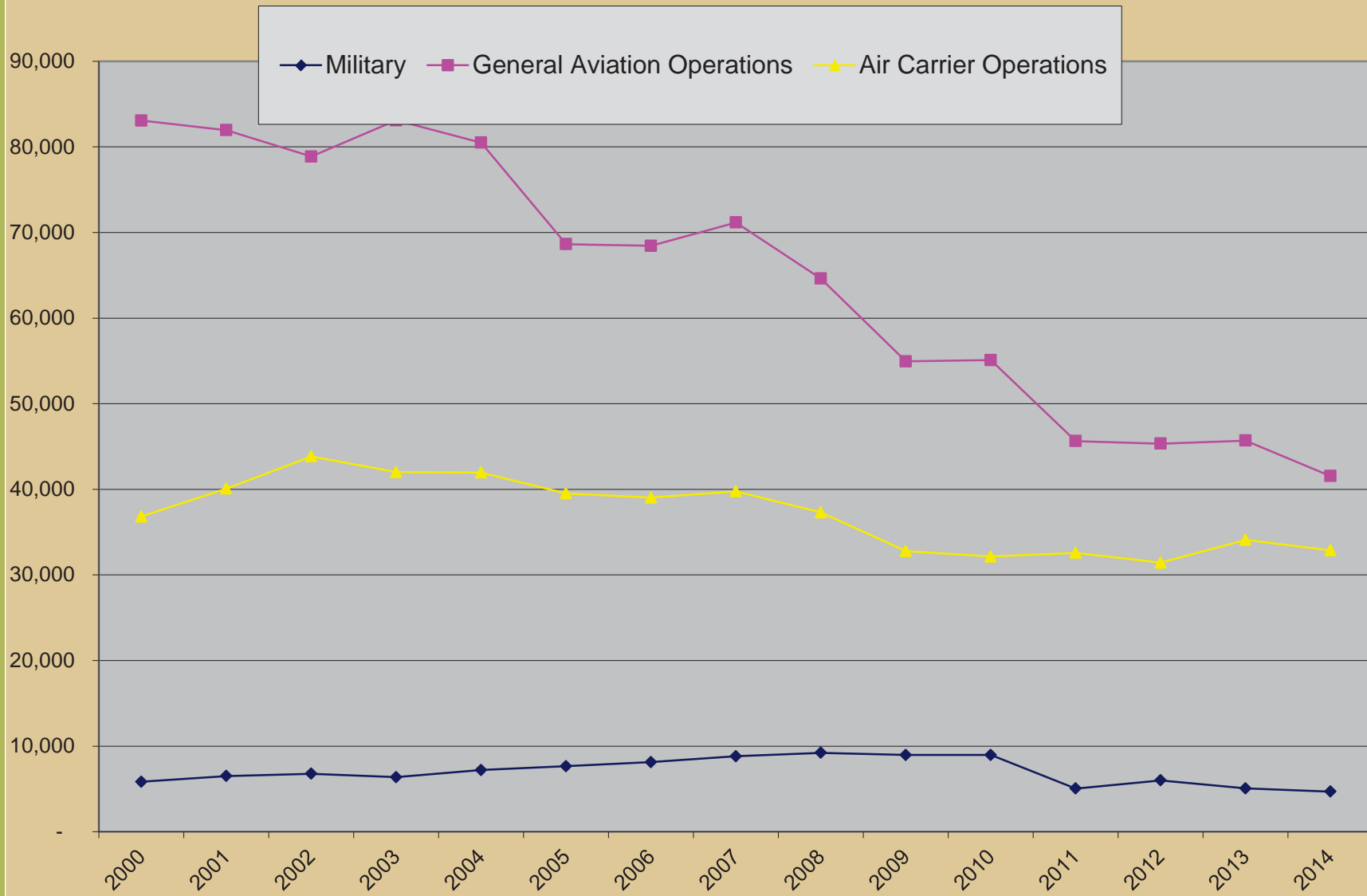


Aircraft Operations

Historical Total Aircraft Operations, DCRA

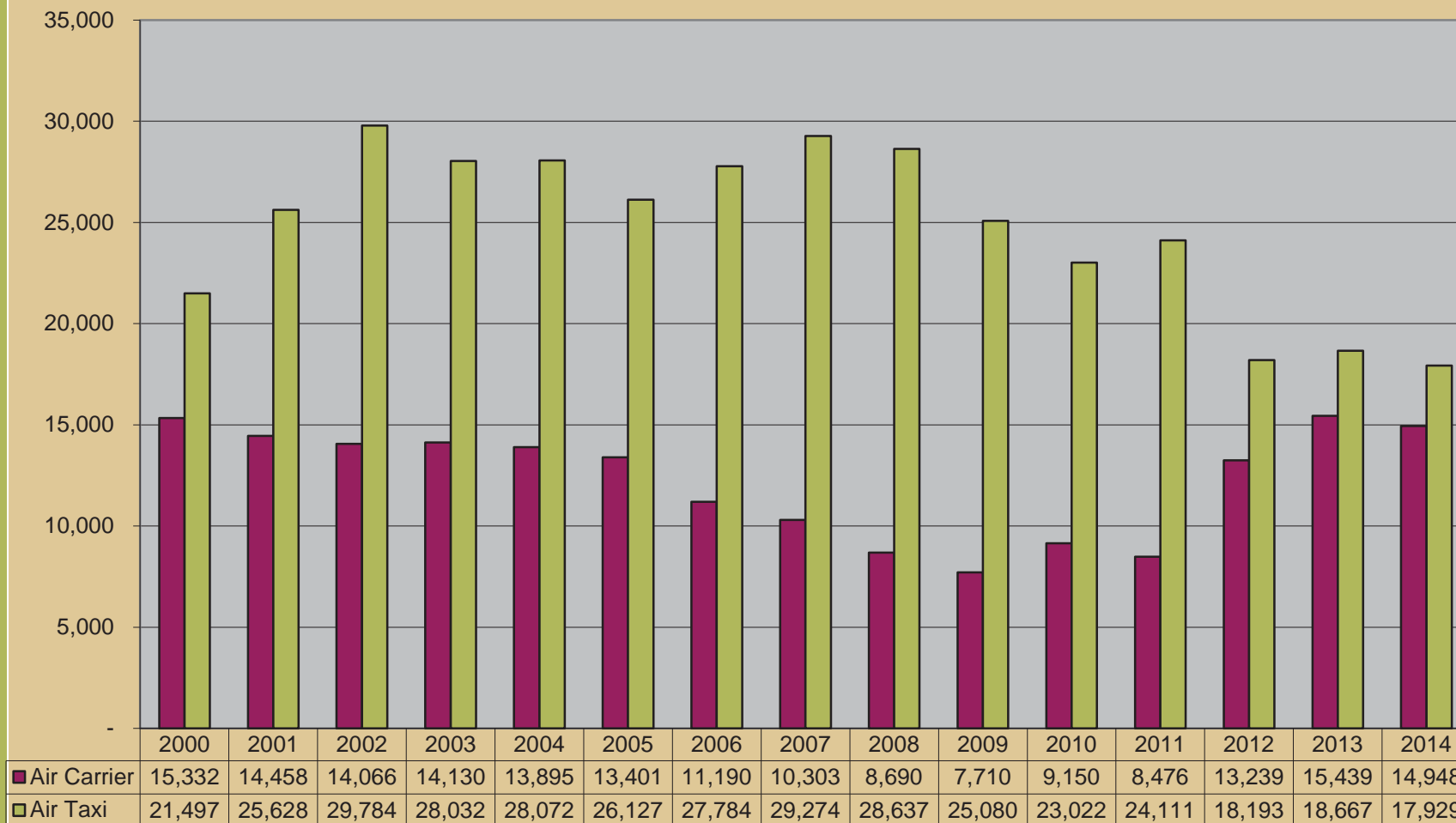


Historical Aircraft Operations by Type



Air Carrier (A-320, B717) vs Air Taxi (CRJ, ERJ)

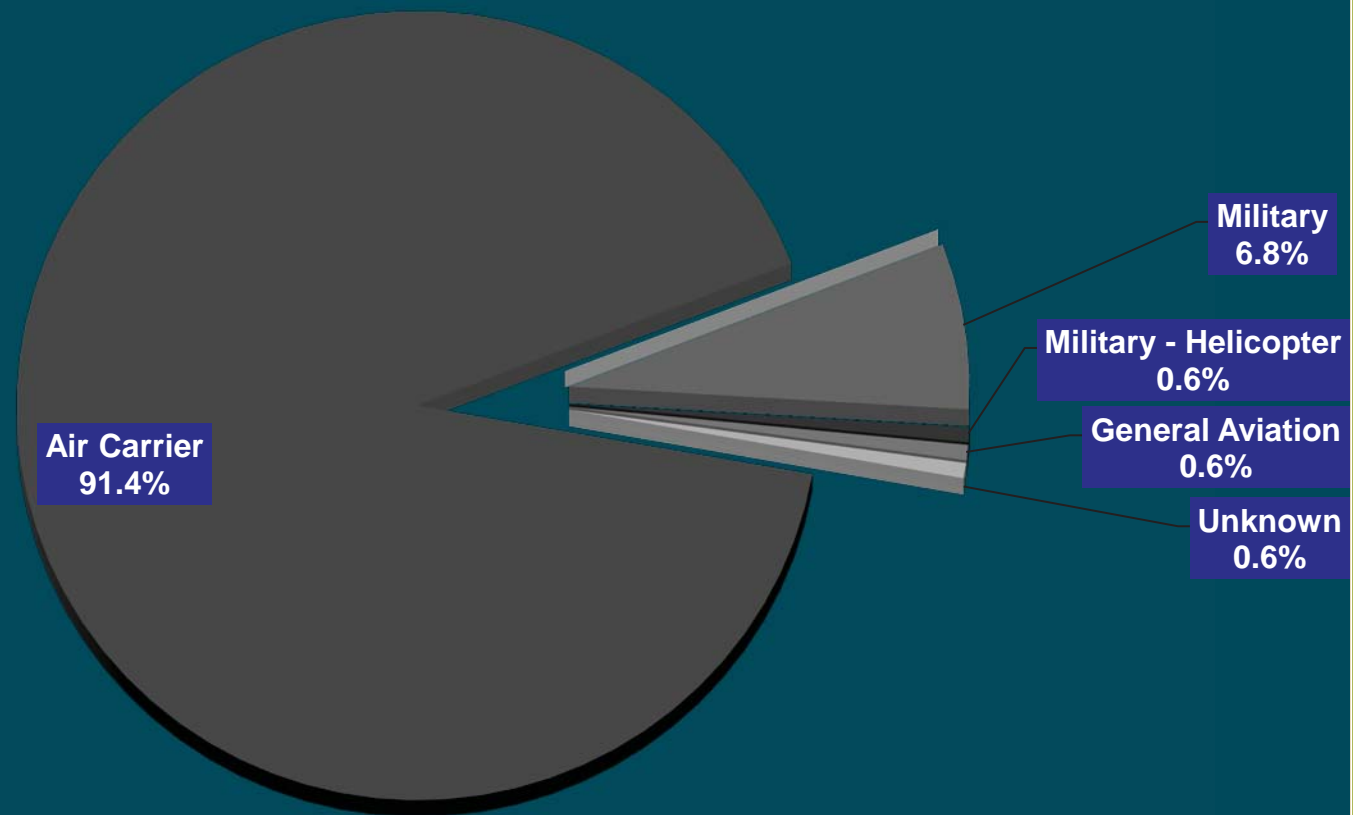
AC aircraft have 60 or more seats
AT aircraft have 59 seats or less



Complaints by Aircraft Type

OCT 14 – MAR 15

6



Complaints by Area

OCT 14 – MAR 15

7

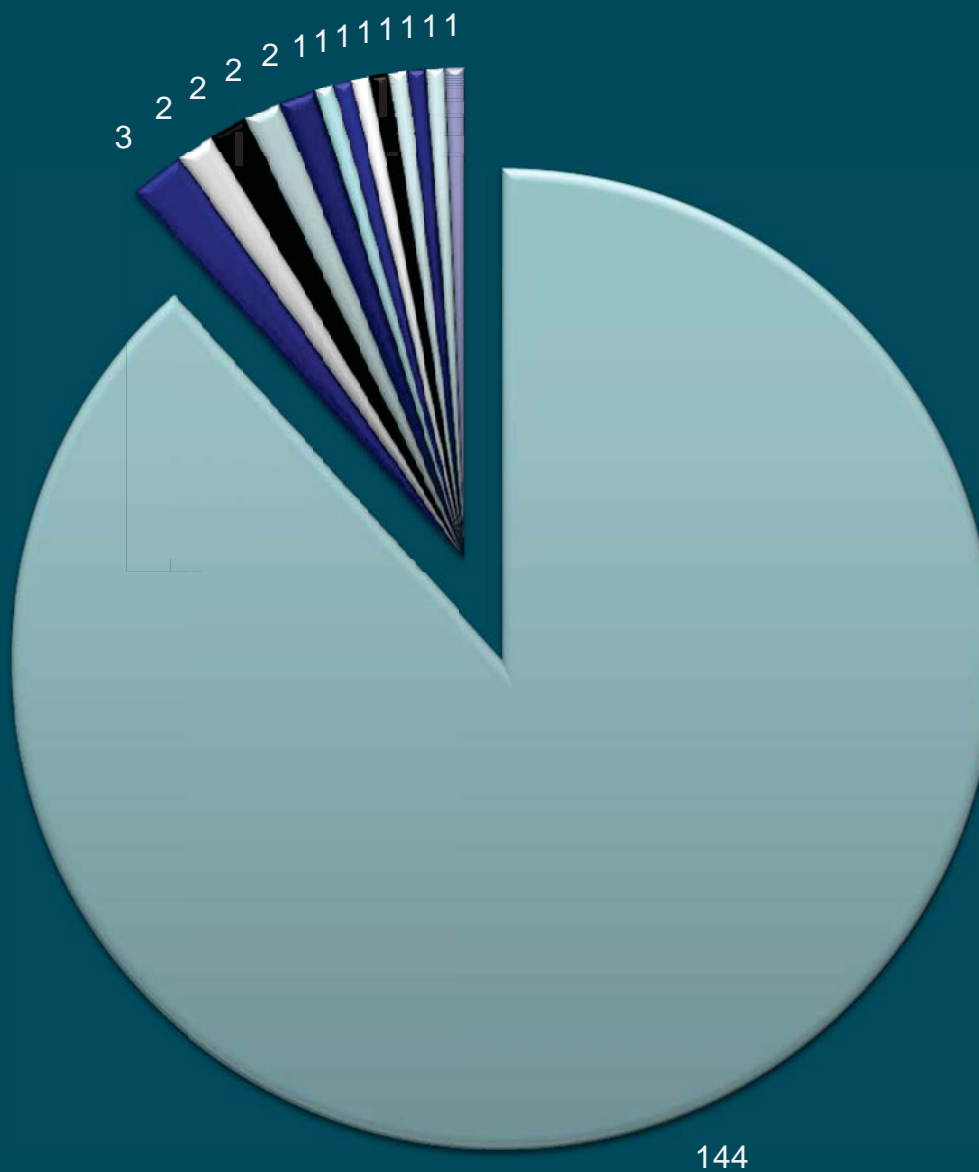
Area	OCT 14 - MAR 15		OCT 13 - MAR 14	
	Complaints	Callers	Complaints	Callers
<i>DeForest</i>	144	1	118	1
<i>Madison</i>	15	11	29	14
<i>Marshall</i>	2	1	0	0
<i>Sun Prairie</i>	2	2	0	0
Total	163	15	147	15



Complaints per Household

OCT 14 – MAR 15

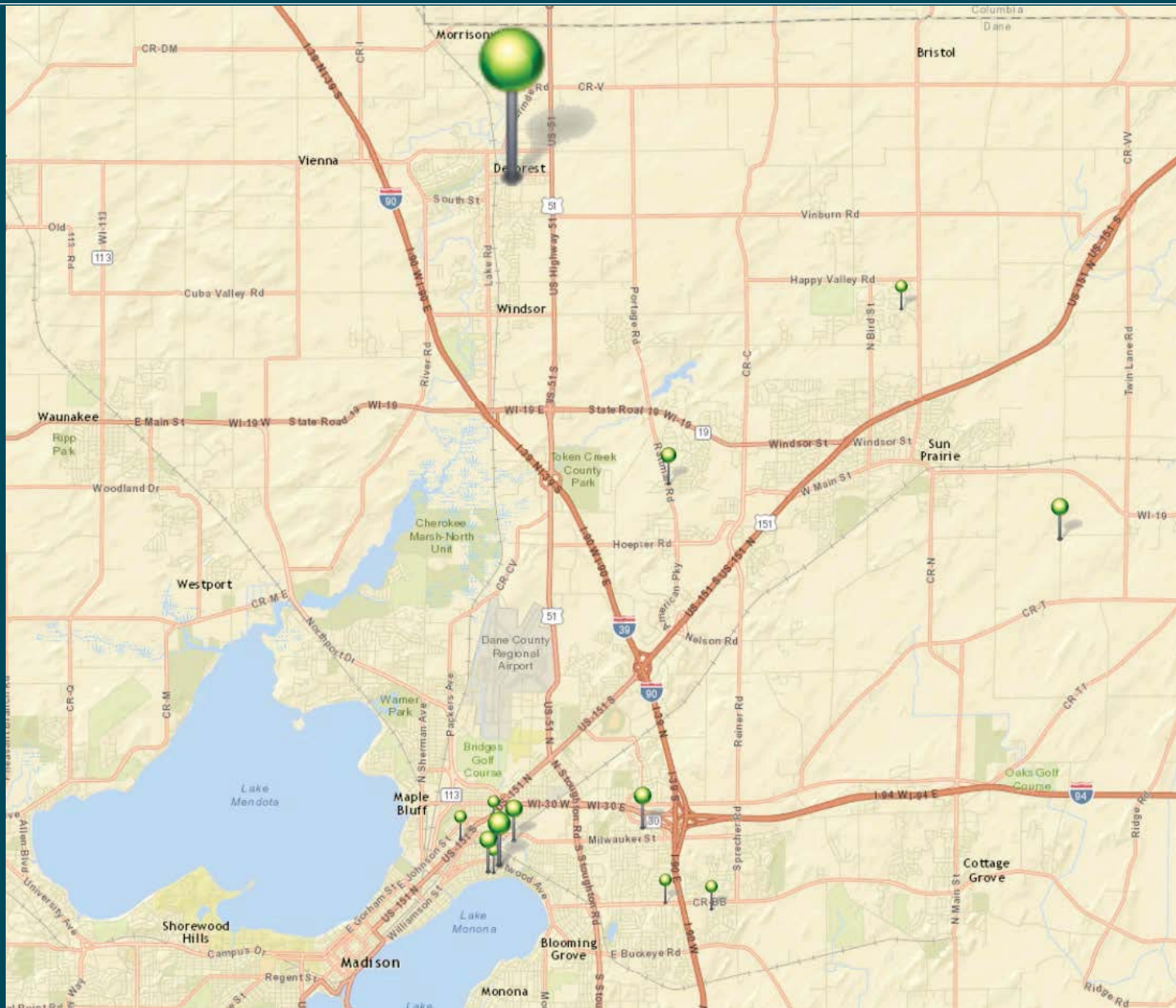
8



COMPLAINT LOCATIONS

OCT 14 – MAR 15

10



NOISE COMPLAINT CALLS

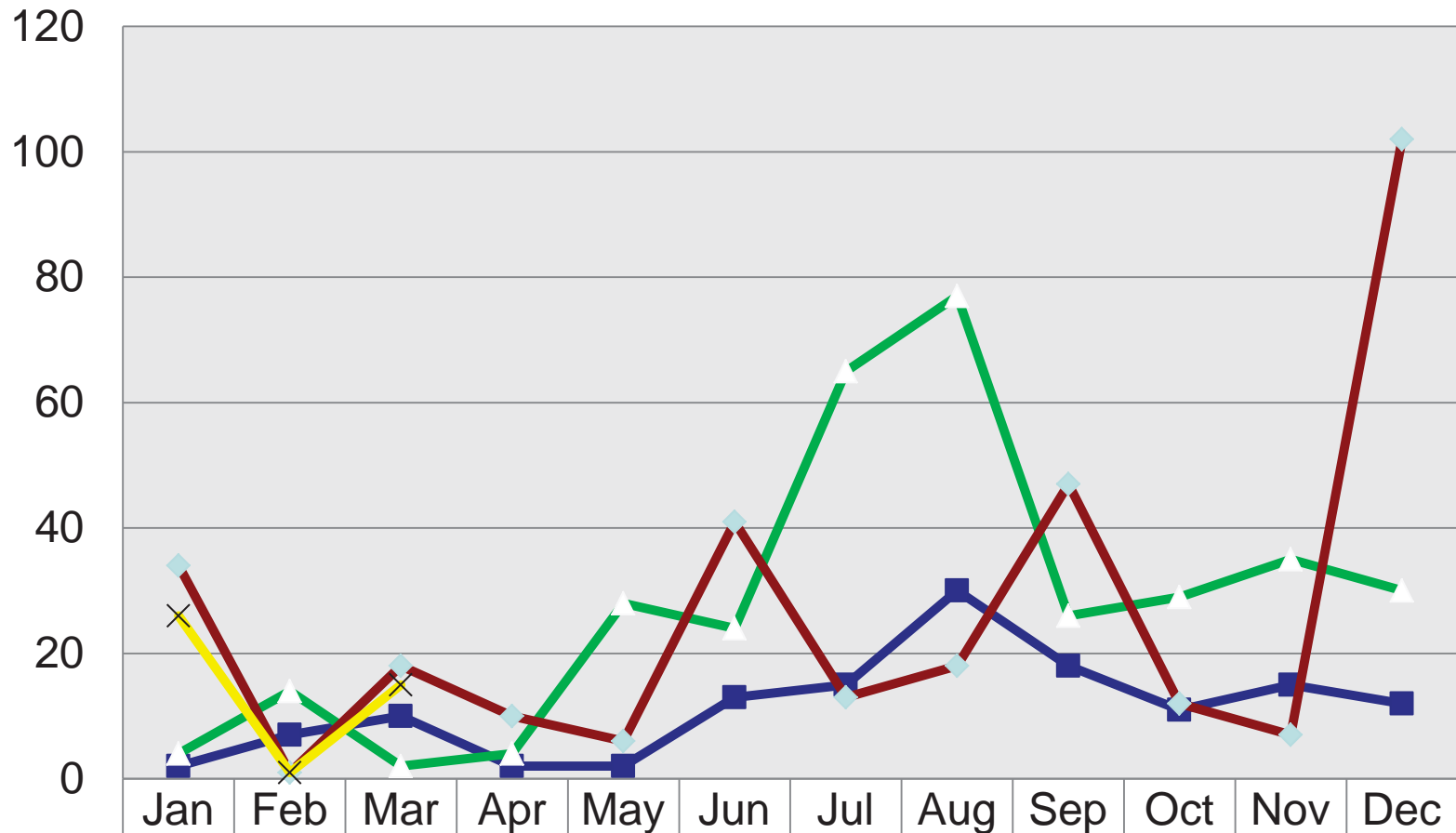
OCT 14 – MAR 15

11

	OCT	NOV	DEC	JAN	FEB	MAR	TOTAL
DAY	12	7	92	23	1	12	147
NIGHT	0	0	10	3	0	3	16
TOTAL	12	7	102	26	1	15	163



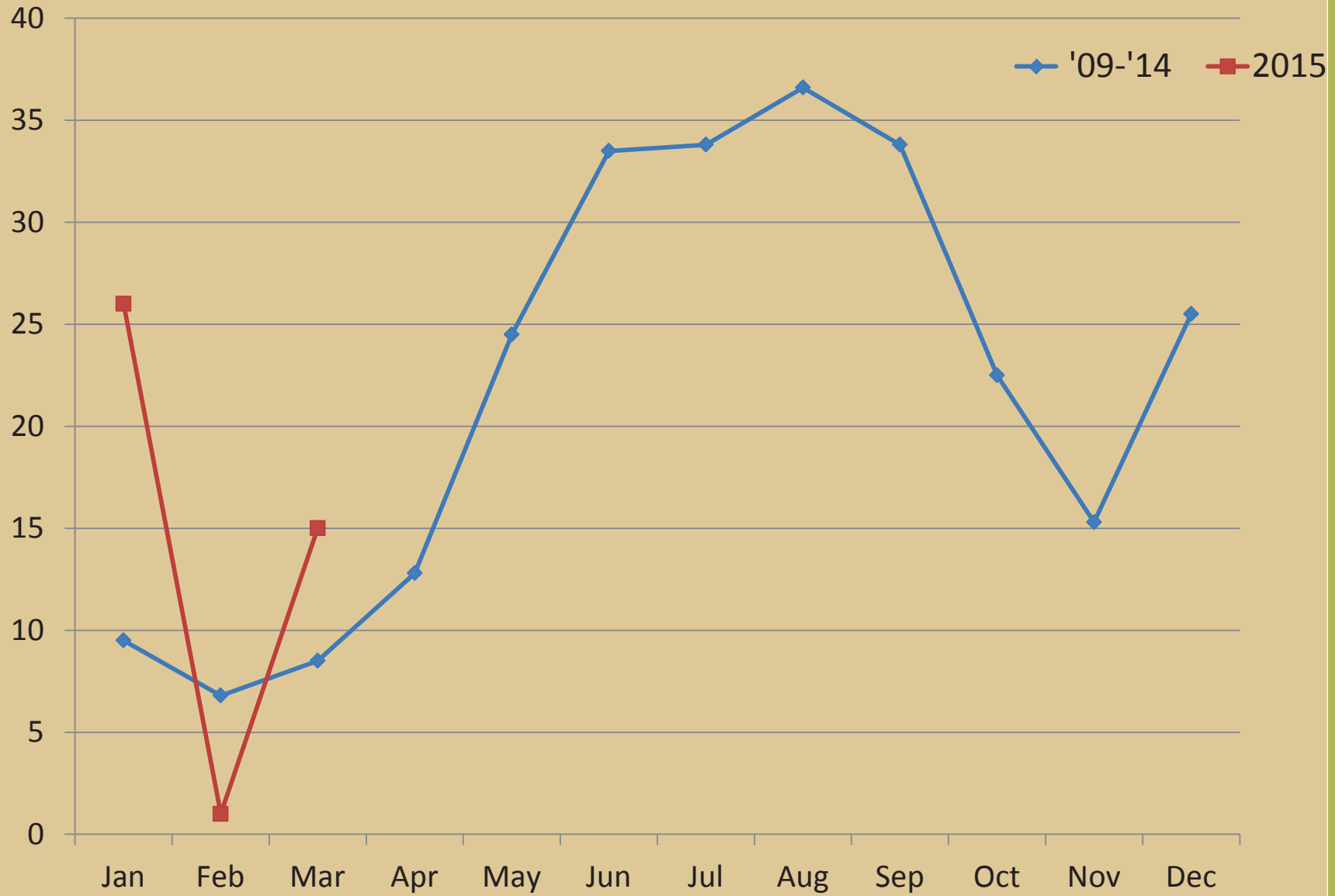
2012 - 2015 Noise Complaint History



	Jan	Feb	Mar	Apr	May	Jun	Jul	Aug	Sep	Oct	Nov	Dec
2012	2	7	10	2	2	13	15	30	18	11	15	12
2013	4	14	2	4	28	24	65	77	26	29	35	30
2014	34	1	18	10	6	41	13	18	47	12	7	102
2015	26	1	15									



Noise Complaint History



COMPLAINT HISTORY

OCT 14 – MAR 15

	1	2	3	4	5	6	7	8	9	10	11	12	13	14	15	16	17	18	19	20	21	22	23	24	25	26	27	28	29	30	31			
OCT						M						A A A	M		A	M		A							A A A			A						
NOV				U											A A	A A A A																		
DEC											M								A A A	AA AA AA AA	AAA AAA AAA AAA AAA AAA AAA AAA AAA AAA AAA AAA A	AAA MAA AAA AAA AAA AAA A A	MAA AAA AAA AAA AAA A A	A						M				
JAN		A A A											A A A	AA AA AA	A A A	MA AA AA AA																H		
FEB																							A											
MAR			A			M				M M G	AA AA AA AA	A A																						

A = Airline; G = General Aviation; H = Military Helicopter; M = Military Fixed Wing; U = Unknown



WIND CONDITIONS SUMMARY

15



- WINDS FROM THE SOUTH
THAT ARE GREATER THAN 10 KNOTS
- VISIBILITY GREATER THAN 3 MILES
- RUNWAY CONDITION IS DRY
- PILOT COMPLIES WITH VOLUNTARY CONTRA FLOW OPERATION

Wisconsin Wind Data*

*National Weather Service

16

Month	Prevailing Wind	Greater than 5 kts
Jan	WNW – 11.5	94.0%
Feb	WNW – 12	93.4%
Mar	NW – 13	93.9%
Apr	S – 11.4	93.6%
May	S – 10.4	93.0%
Jun	S – 9.7	91.6%
Jul	S – 9.2	90.1%
Aug	S – 9.1	88.9%
Sep	S – 9.8	90.1%
Oct	S – 10.4	92.2%
Nov	S – 10.7	94.3%
Dec	WNW – 12.4	94.0%
Annual	S – 12.4	92.4%



NOISE ABATEMENT COMPLIANCE AUDIT

WEATHER / RUNWAY DATA	
WINDS AT 5 KNOTS OR HIGHER ¹	81.67%
VISIBILITY AT 5 STATUTE MILES OR LESS	11.23%
RUNWAYS CLOSED ²	18/36 = 56:16 3/21 = 272:15 14/32 = 257:15
¹ – Based on METAR weather observations at the time of recorded aircraft operations. ² – Runway closures primarily due to snow and ice control procedures	



NOISE ABATEMENT COMPLIANCE AUDIT

RUNWAY USE

Aircraft observed departing to the North	37.89%
Aircraft observed arriving from the North	48.69%
Aircraft observed departing to the South	62.11%
Aircraft observed arriving from the South	51.31%

PASSUR FLIGHT TRACKING

14,366 operations recorded by Passur flight monitoring system



NOISE ABATEMENT COMPLIANCE AUDIT

**** With 100% compliance of Noise Abatement Procedures, there are times aircraft are required depart to the south and arrive from the south. ****

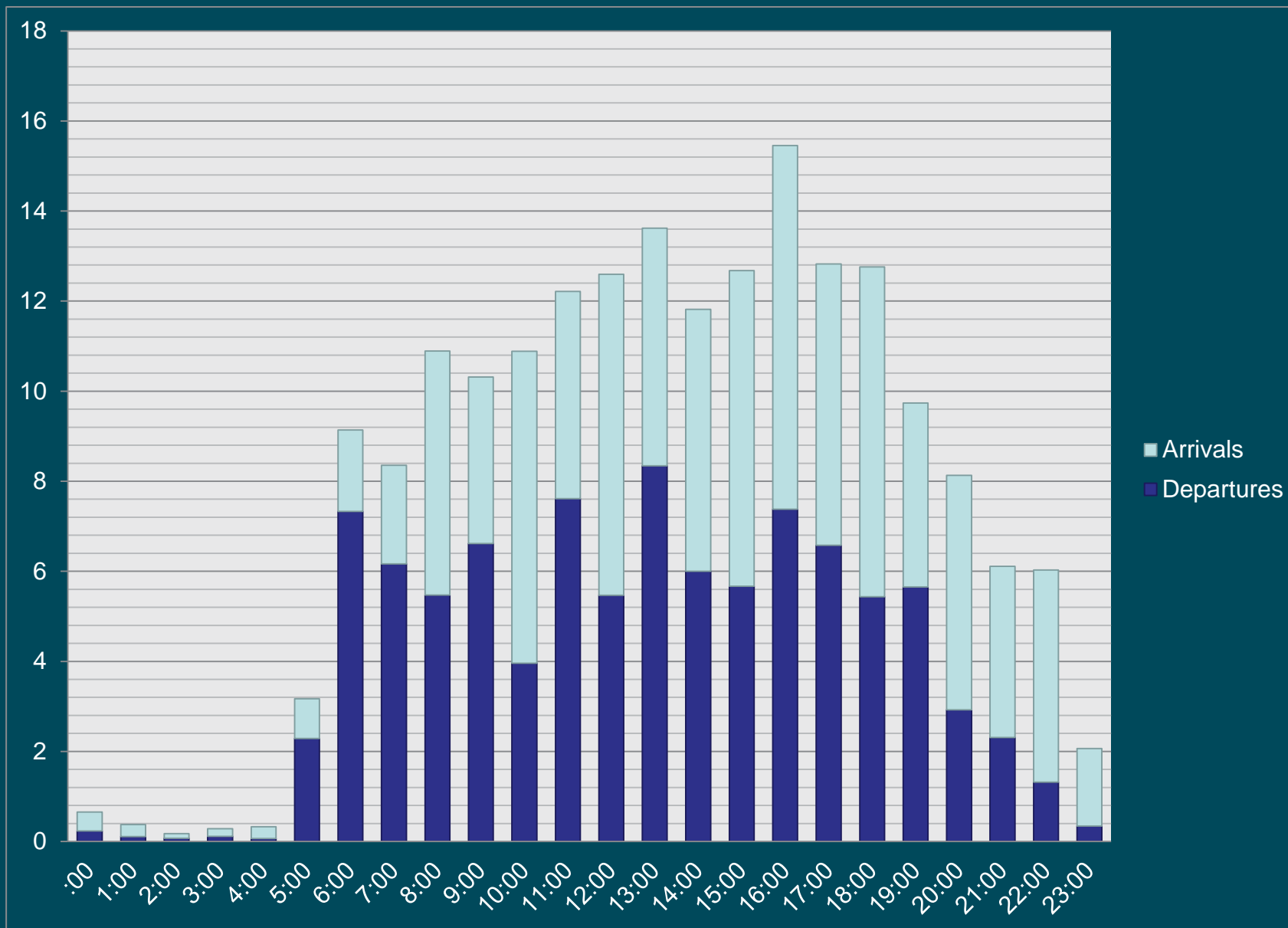
RUNWAY USE FACTORS			
	Wind	Visibility	Ceiling
South Departure	73.46%	15.91%	0.00%
South Arrival	71.61%	7.73%	31.80%

**** Safety, traffic, airline requirements, and weather are all components which are factored into a pilot's decision when landing and taking off. ****



AVERAGE HOURLY OPERATIONS

OCT 14 – MAR 15



CONTACT INFORMATION

21

24 Hour Aircraft Noise Line: **246-5841**

Online Form: <http://www.msnaairport.com/community/noise.aspx>

Madison Automated Weather: **249-0615**



Questions?

