

# Noise Abatement Subcommittee

## Review of Noise Complaint Activity

APRIL 10, 2014

Madison, Wisconsin



# AIRCRAFT MOVEMENTS

OCT 13 – MAR 14

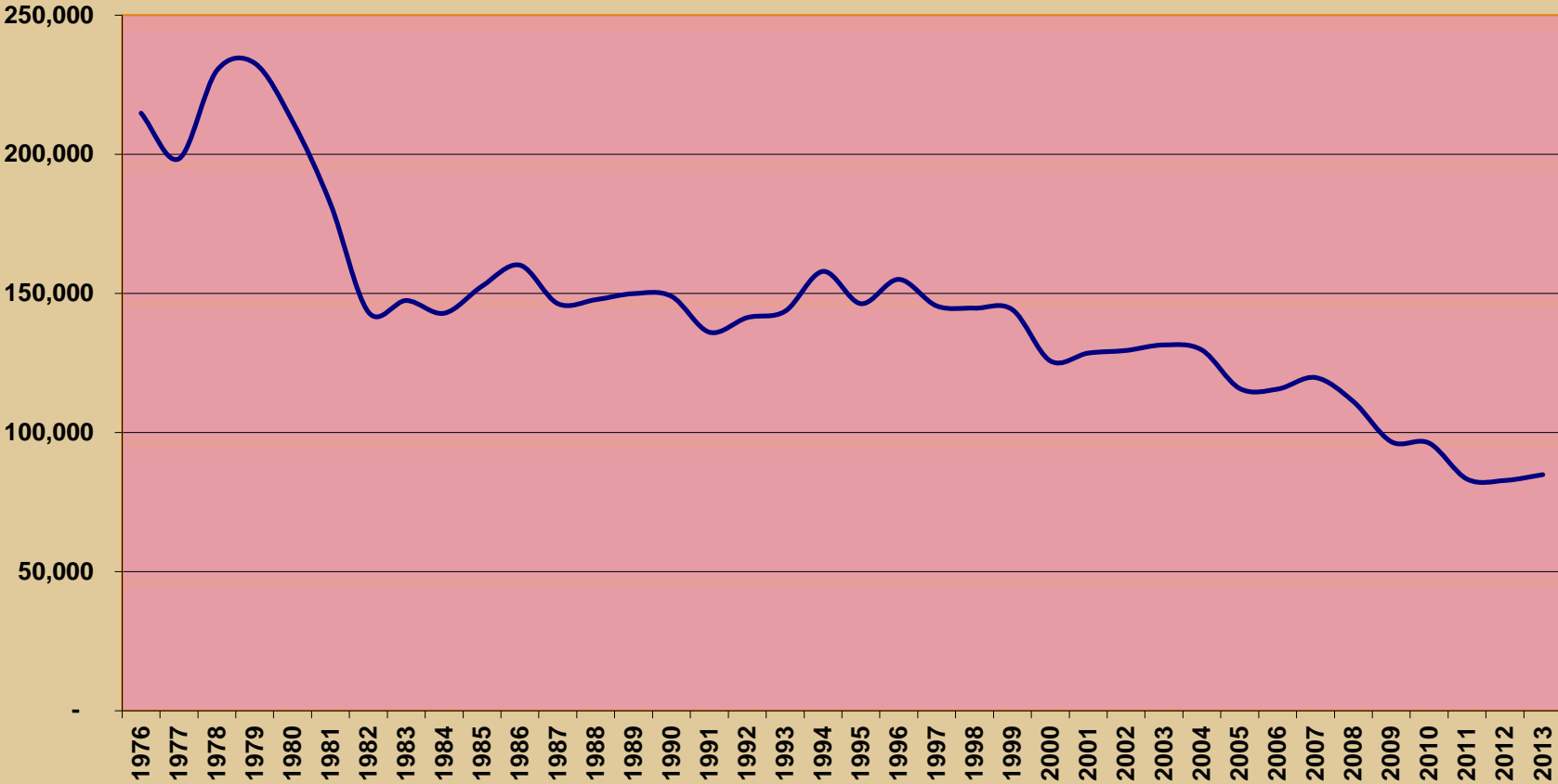
2

<b>Aircraft Movements</b>	<b>OCT 13–APR 14</b>	<b>OCT 12–APR 13</b>	<b>% Change</b>
<i><b>Air Carrier</b></i>	<b>16,463</b>	<b>15,892</b>	<b>3%</b>
<i><b>Military</b></i>	<b>2,208</b>	<b>2,425</b>	<b>-9%</b>
<i><b>General Aviation</b></i>	<b>19,401</b>	<b>18,020</b>	<b>7%</b>
<i><b>Total Movements</b></i>	<b>38,072</b>	<b>36,337</b>	<b>4%</b>

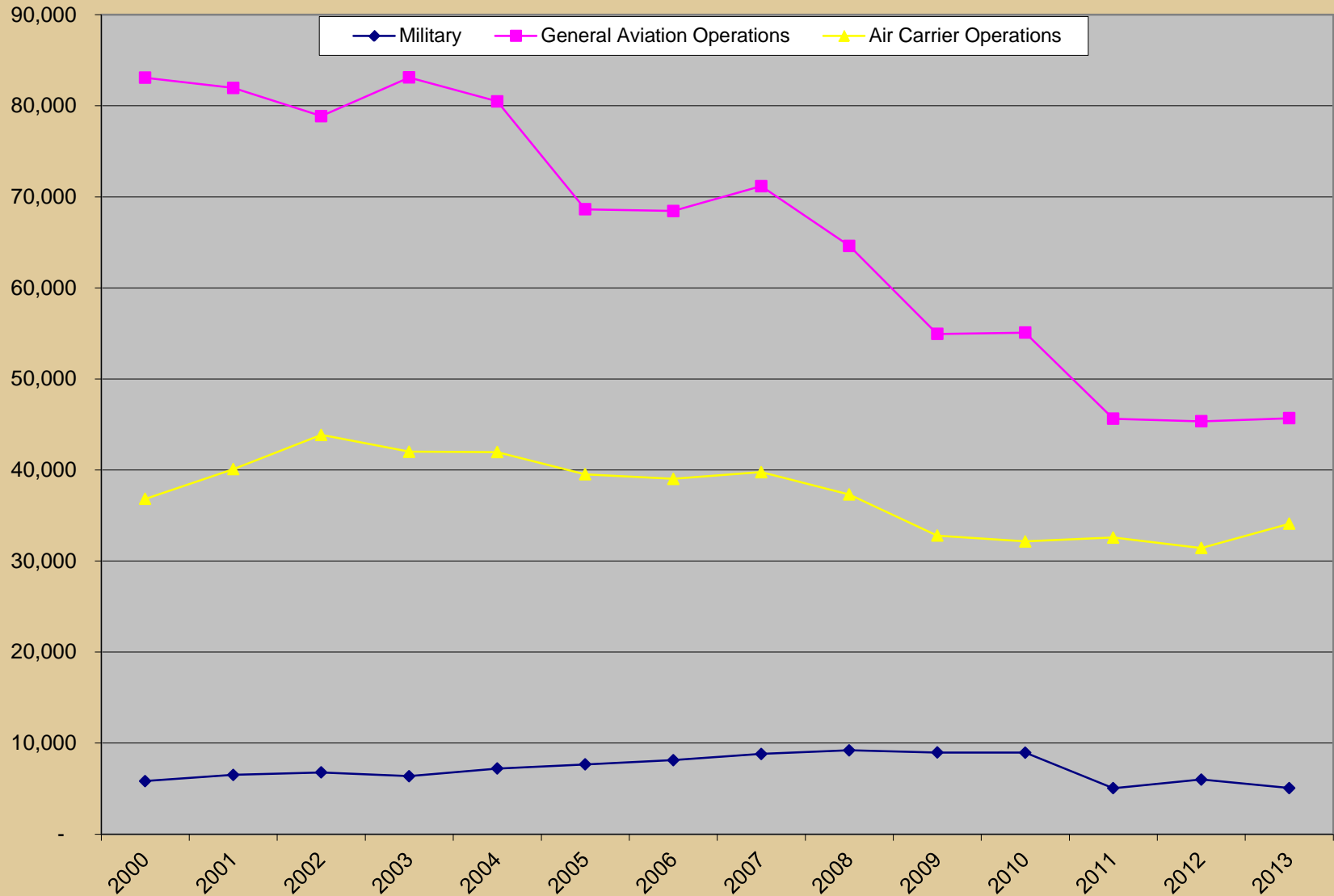


# HISTORICAL AIRCRAFT OPERATIONS

### Historical Total Aircraft Operations, DCRA

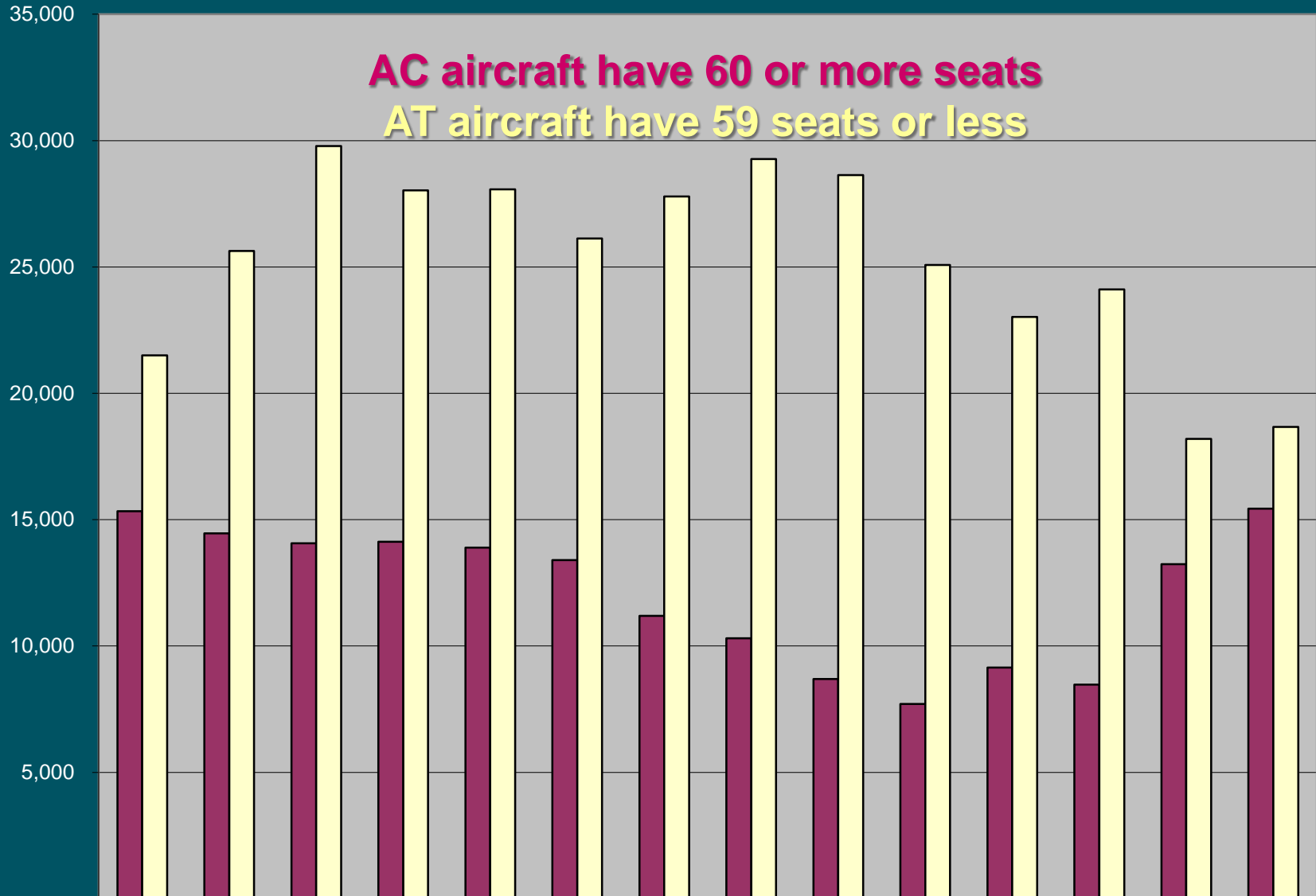


# HISTORICAL OPERATIONS BY AIRCRAFT TYPE



# AIR CARRIER (A-320, MD-88) vs AIR TAXI (CRJ, ERJ)

**AC aircraft have 60 or more seats**  
**AT aircraft have 59 seats or less**



■ Air Carrier	15,332	14,458	14,066	14,130	13,895	13,401	11,190	10,303	8,690	7,710	9,150	8,476	13,239	15,439
■ Air Taxi	21,497	25,628	29,784	28,032	28,072	26,127	27,784	29,274	28,637	25,080	23,022	24,111	18,193	18,667



# COMPLAINTS BY AREA

Area	OCT 13 - MAR 14		OCT 12 - MAR 13	
	Complaints	Households	Complaints	Households
<i>Blooming Grove</i>	0	0	0	0
<i>Burke</i>	0	0	0	0
<i>Deerfield</i>	0	0	0	0
<i>DeForest</i>	117	1	22	2
<i>Fitchburg</i>	0	0	1	1
<i>Madison</i>	29	13	30	23
<i>Marshall</i>	0	0	0	0
<i>Middleton</i>	0	0	0	0
<i>Monona</i>	0	0	0	0
<i>Stoughton</i>	0	0	0	0
<i>Windsor</i>	0	0	0	0
<i>Verona</i>	0	0	0	0
<i>Waunakee</i>	0	0	3	2
<b>Total</b>	<b>146</b>	<b>14</b>	<b>56</b>	<b>28</b>



# REPEAT CALLERS

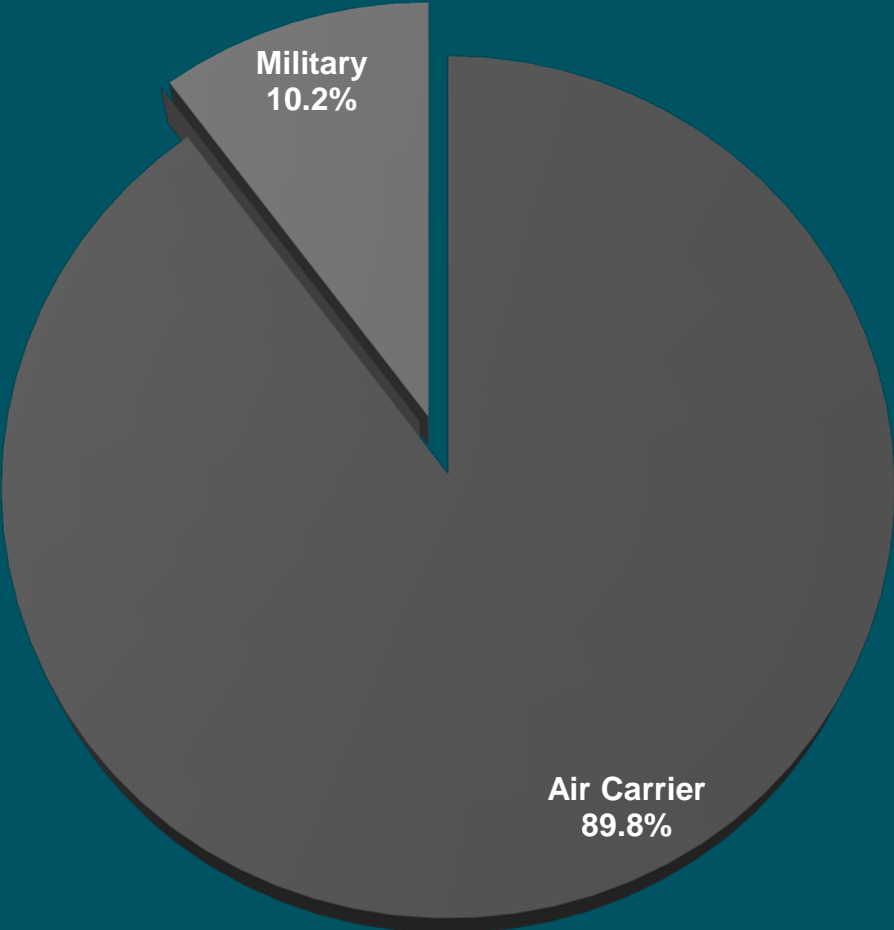
APR 13 – SEP 13

7

AREA	NUMBER OF CALLS
MADISON	29 (13 HOUSEHOLDS)
DEFOREST	117 (1 HOUSEHOLD)

# COMPLAINTS BY AIRCRAFT TYPE

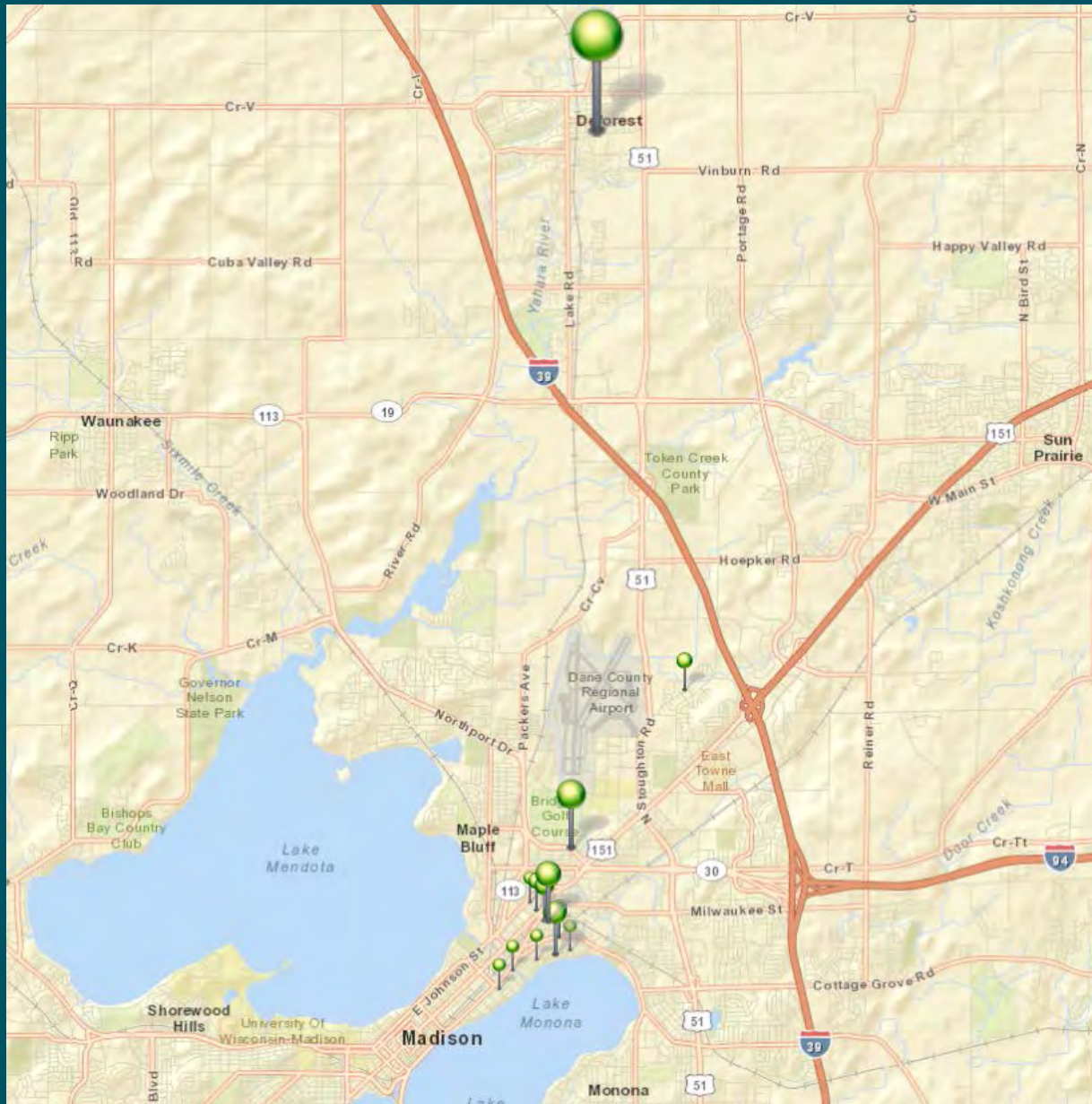
OCT 13 – MAR 14





# COMPLAINT LOCATIONS

OCT 13 – MAR 14



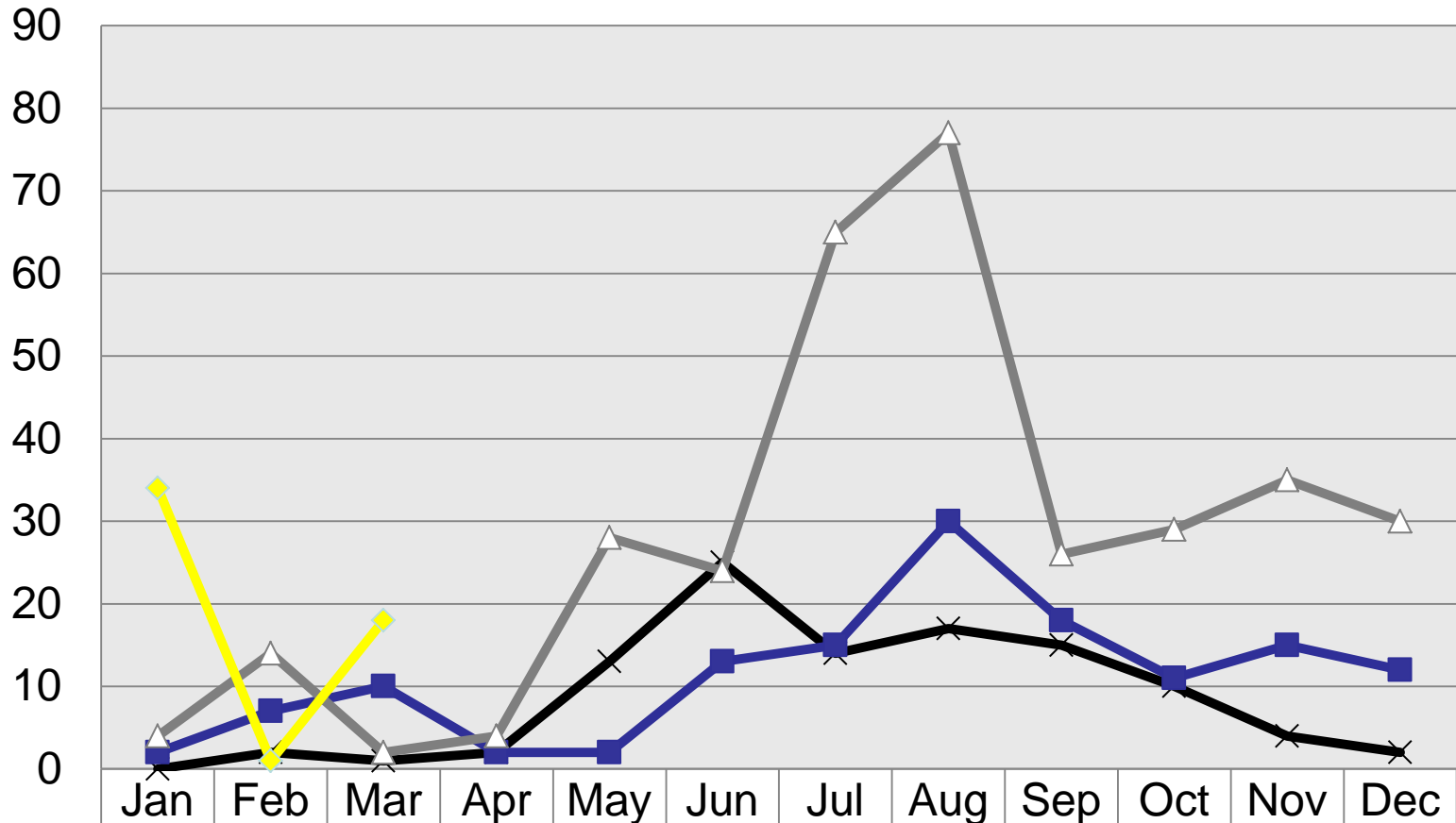
# NOISE COMPLAINT CALLS

OCT 13 – MAR 14

10

	OCT	NOV	DEC	JAN	FEB	MAR	TOTAL
DAY	10	31	26	13	0	12	92
NIGHT	18	4	4	21	1	6	54
TOTAL	28	35	30	34	1	18	146

# 2011 - 2014 Noise Complaint History

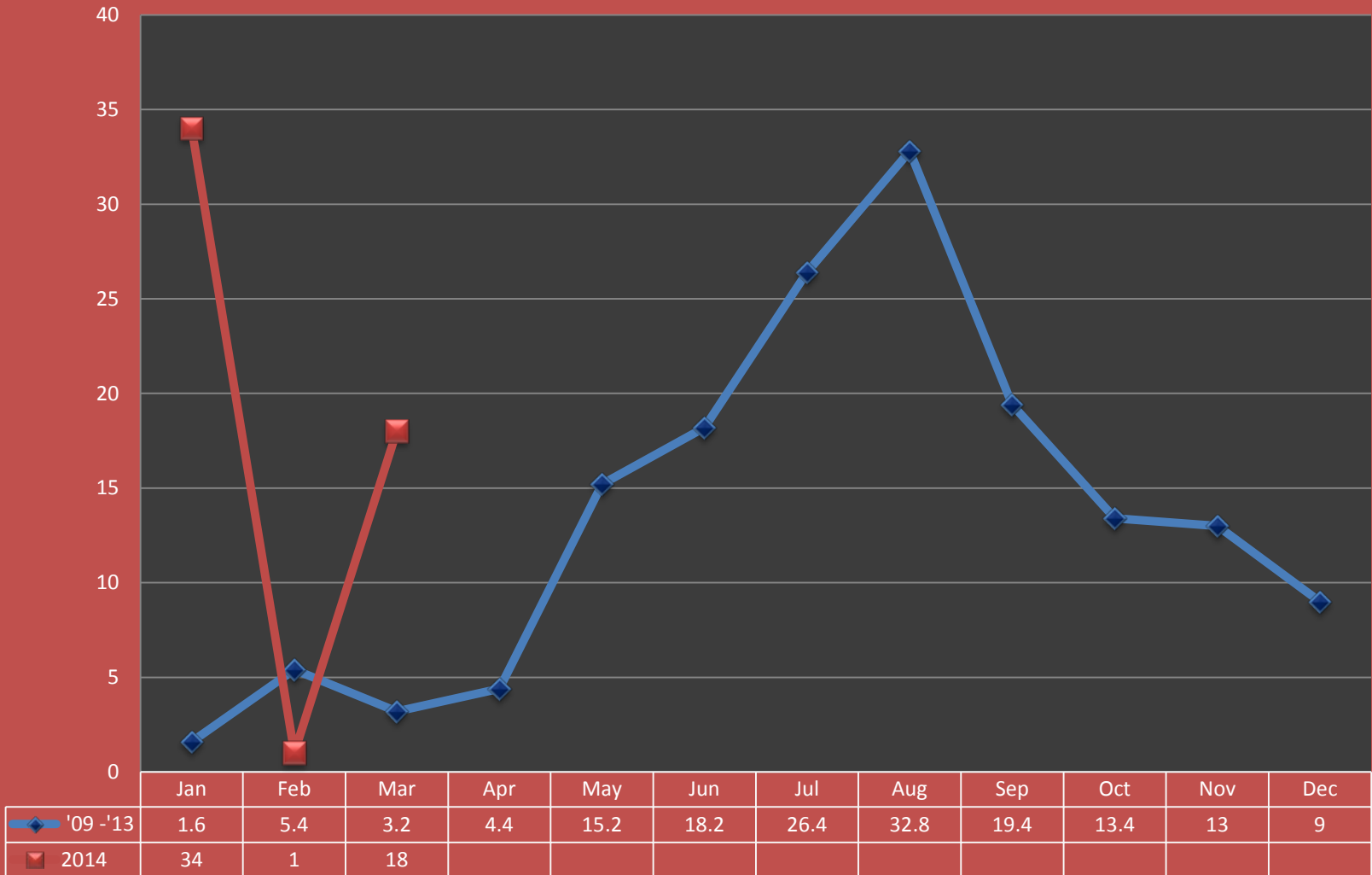


	Jan	Feb	Mar	Apr	May	Jun	Jul	Aug	Sep	Oct	Nov	Dec
2011	0	2	1	2	13	25	14	17	15	10	4	2
2012	2	7	10	2	2	13	15	30	18	11	15	12
2013	4	14	2	4	28	24	65	77	26	29	35	30
2014	34	1	18									



# Noise Complaint History

## Average Monthly Noise Complaints '09-'13 Average vs 2014 Complaints



# COMPLAINT HISTORY

OCT 13 – APR 14

	1	2	3	4	5	6	7	8	9	10	11	12	13	14	15	16	17	18	19	20	21	22	23	24	25	26	27	28	29	30	31
OCT	A A	AA AA A	A A A						A	A					A A A A	AA AA A													A A A	A A A	
NOV					A							A A A	A A A	A A A	AA AA AA AA A	A A A A		M	A A A A		A						A A				
DEC		AA AA AA AA AA		M	M M M M	A	M					AA AA AA AA A						M		A A									A		
JAN									AA AA AA AA AA AA AA AA AA AA	A		A A A		A A A A A M														A		A A	
FEB									A																						
MAR			A A A A		A A A A	A A					M	M		M				M	A		M						M				

A = Airline; M = Military Fixed Wing



# Wisconsin Wind Data\*

\*National Weather Service

14

Month	Prevailing Wind	Greater than 5 kts
Jan	WNW – 11.5	94.0%
Feb	WNW – 12	93.4%
Mar	NW – 13	93.9%
Apr	S – 11.4	93.6%
May	S – 10.4	93.0%
Jun	S – 9.7	91.6%
Jul	S – 9.2	90.1%
Aug	S – 9.1	88.9%
Sep	S – 9.8	90.1%
Oct	S – 10.4	92.2%
Nov	S – 10.7	94.3%
Dec	WNW – 12.4	94.0%
Annual	S – 12.4	92.4%

# NOISE ABATEMENT COMPLIANCE AUDIT

WEATHER / RUNWAY DATA	
WINDS AT 5 KNOTS OR HIGHER <sup>1</sup>	83.49%
VISIBILITY AT 5 STATUTE MILES OR LESS	13.41%
RUNWAYS CLOSED <sup>2</sup>	18/36 = 59:06 3/21 = 492:33 14/32 = 467:14
<sup>1</sup> – Based on METAR weather observations at the time of recorded aircraft operations. <sup>2</sup> – Runway closures primarily due to snow and ice control	



## RUNWAY USE

Aircraft observed departing to the North	35.46%
Aircraft observed arriving from the North	52.02%
Aircraft observed departing to the South	64.54%
Aircraft observed arriving from the South	47.98%

## PASSUR FLIGHT TRACKING

**15,781** operations recorded by Passur flight monitoring system

**522** Passur observations of departures to the north and arrivals from the north when conditions allow for implementation of Noise Abatement Procedures



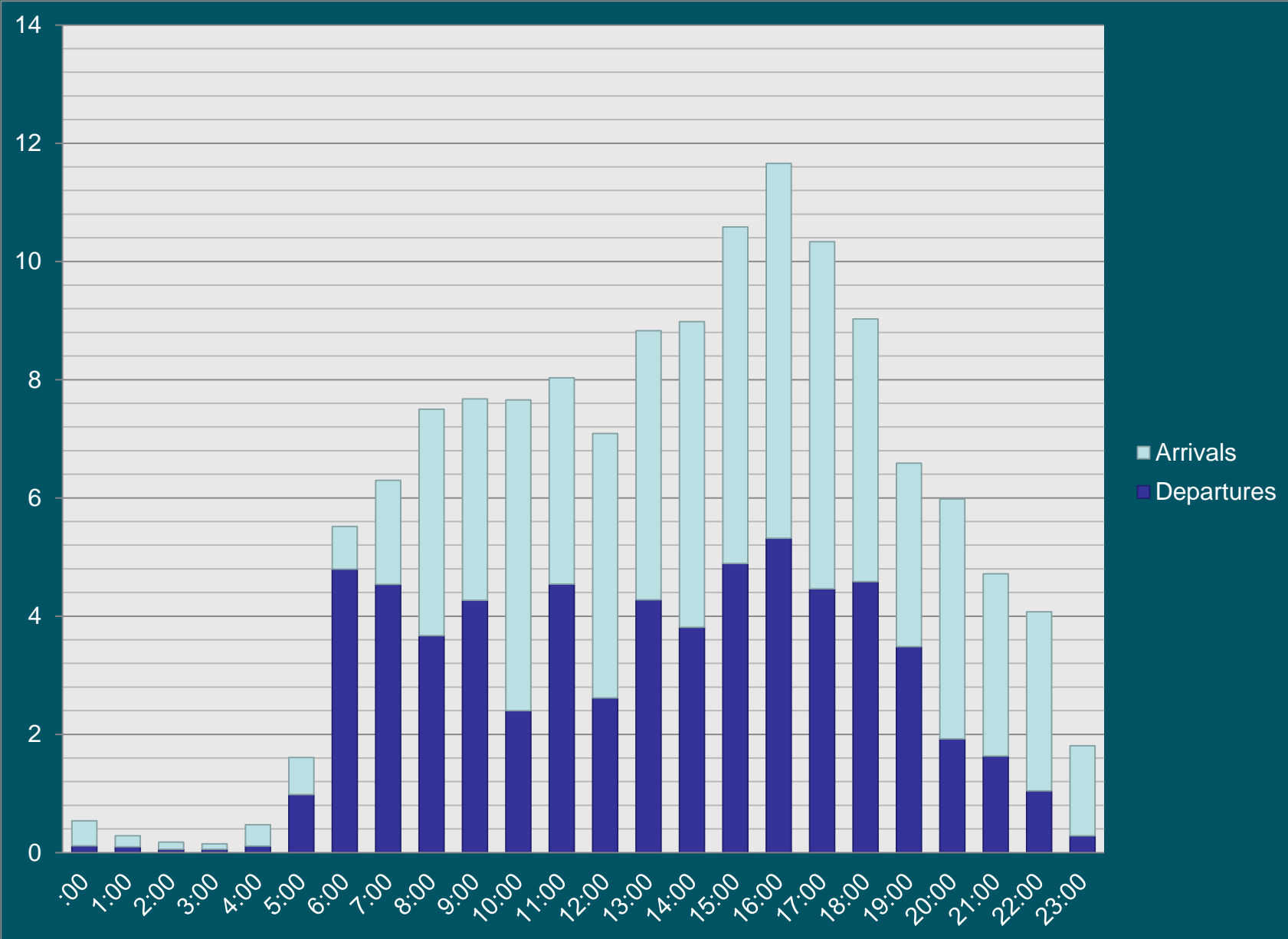
**\*\* With 100% compliance of Noise Abatement Procedures, there are times aircraft are required to depart to the south and arrive from the south. \*\***

RUNWAY USE FACTORS			
	Wind	Visibility	Ceiling
South Departure	75.92%	15.61%	0.00%
South Arrival	74.54%	10.68%	23.20%

**\*\* Safety, traffic, airline requirements, and weather are all components which are factored into a pilot's decision when landing and taking off. \*\***

# AVERAGE HOURLY OPERATIONS

OCT 13 – APR 14



# CONTACT INFORMATION

19

24 Hour Aircraft Noise Line: **246-5841**

Online Form: <http://www.msnaairport.com/community/noise.aspx>

Madison Automated Weather: **249-0615**



# Questions?

