

DANE COUNTY
REGIONAL AIRPORT
MADISON



Noise Abatement Subcommittee

October 24, 2018

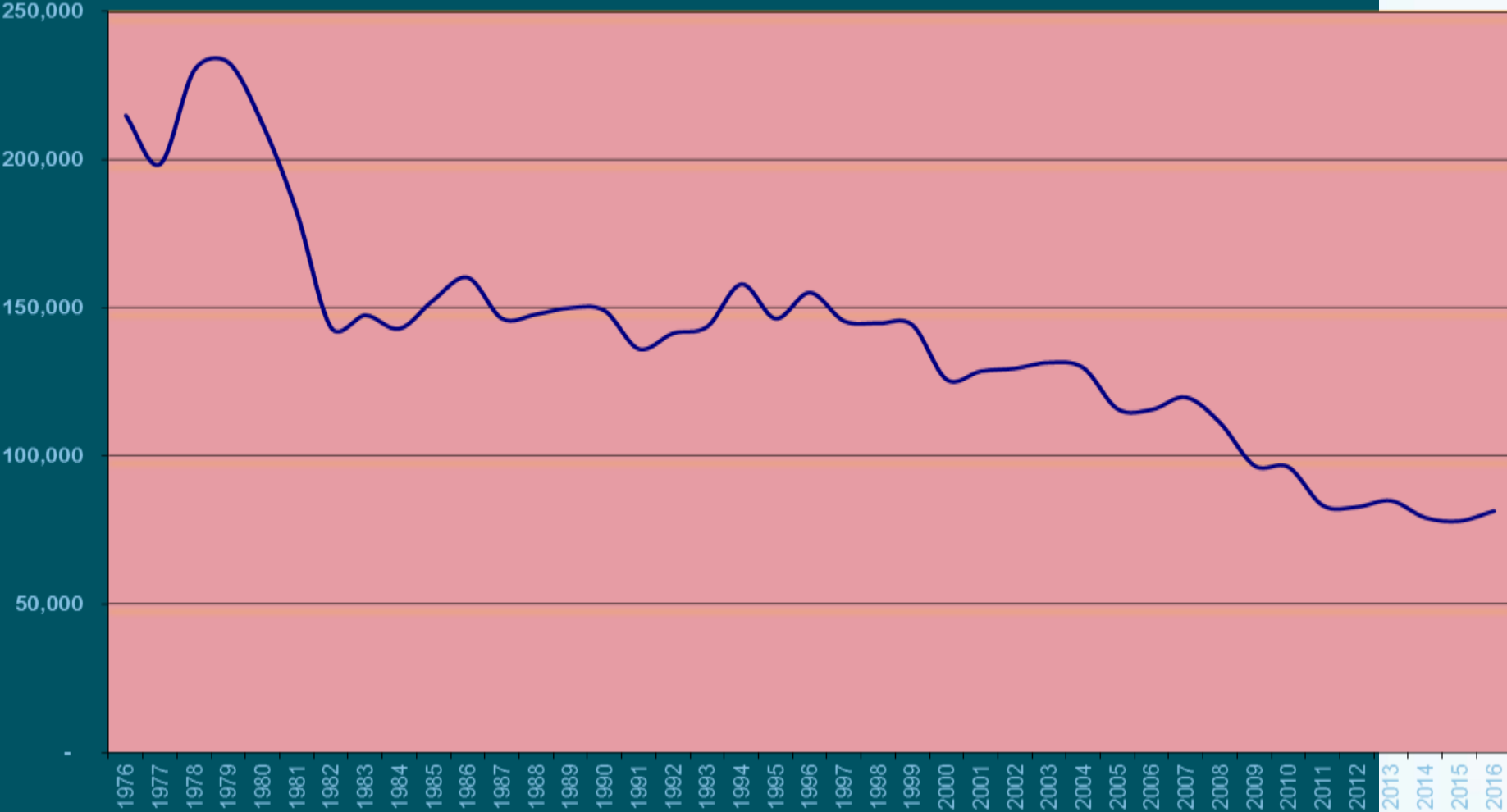
It's all about the journey.

AIRCRAFT MOVEMENTS

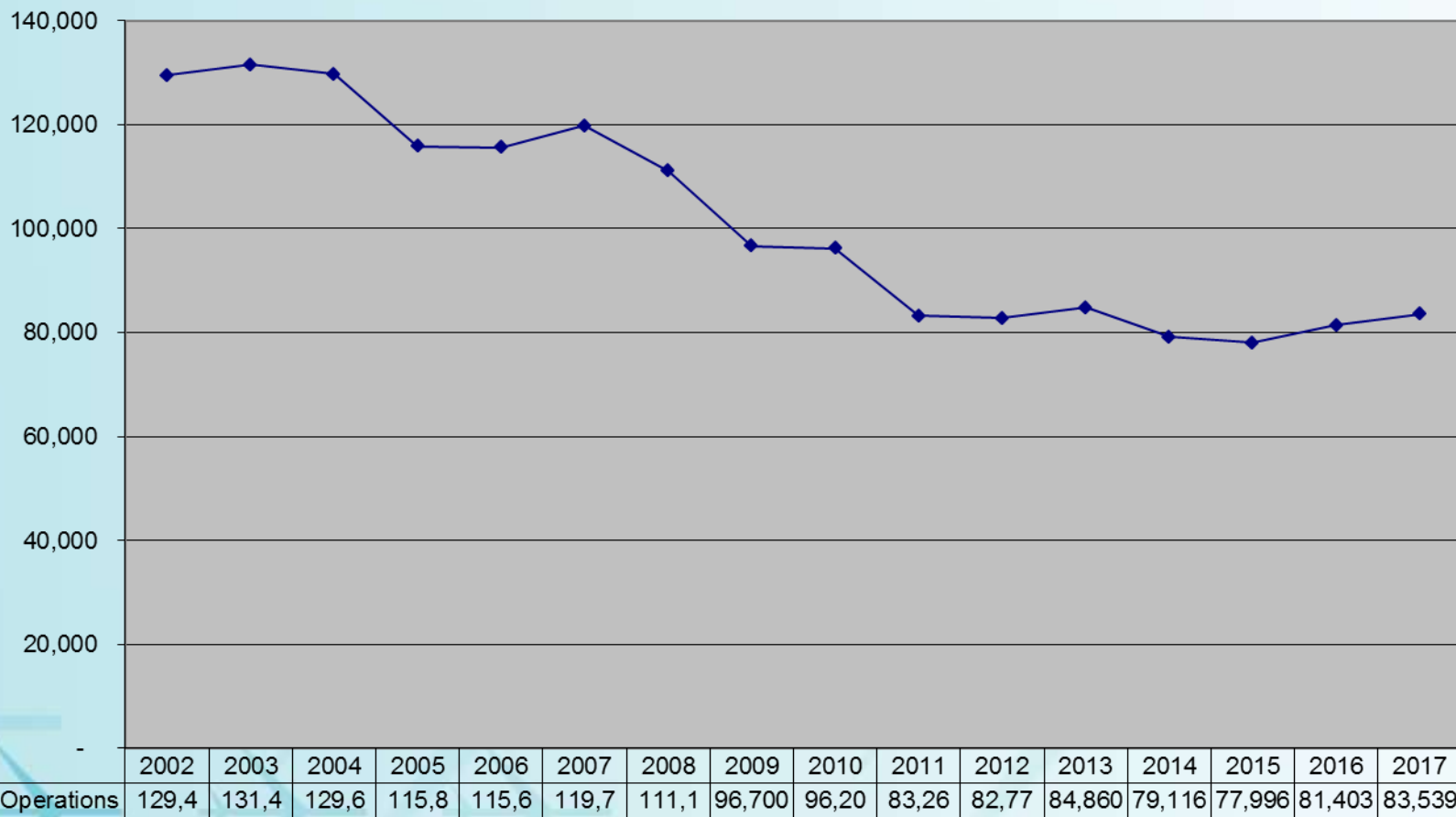
APR 18 – SEP 18

Aircraft Movements	APR 18 – SEP 18	APR 17 – SEP 17	% Change
<i>Air Carrier</i>	17,783	15,540	14%
<i>Military</i>	2,928	1,979	47%
<i>General Aviation</i>	26,345	28,584	-8%
<i>Total Movements</i>	47,056	46,103	2.0%

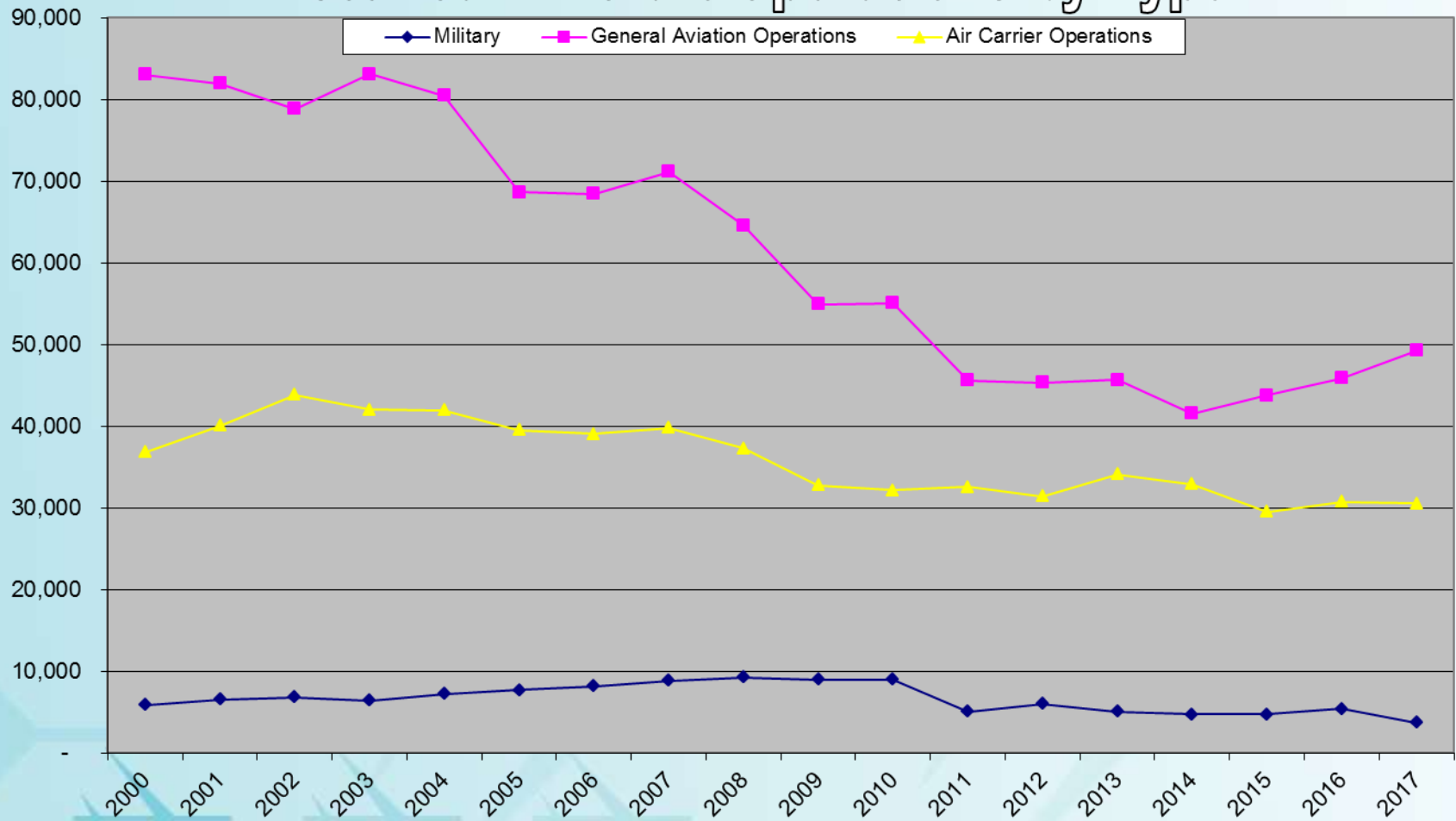
ANNUAL AIRCRAFT OPERATIONS



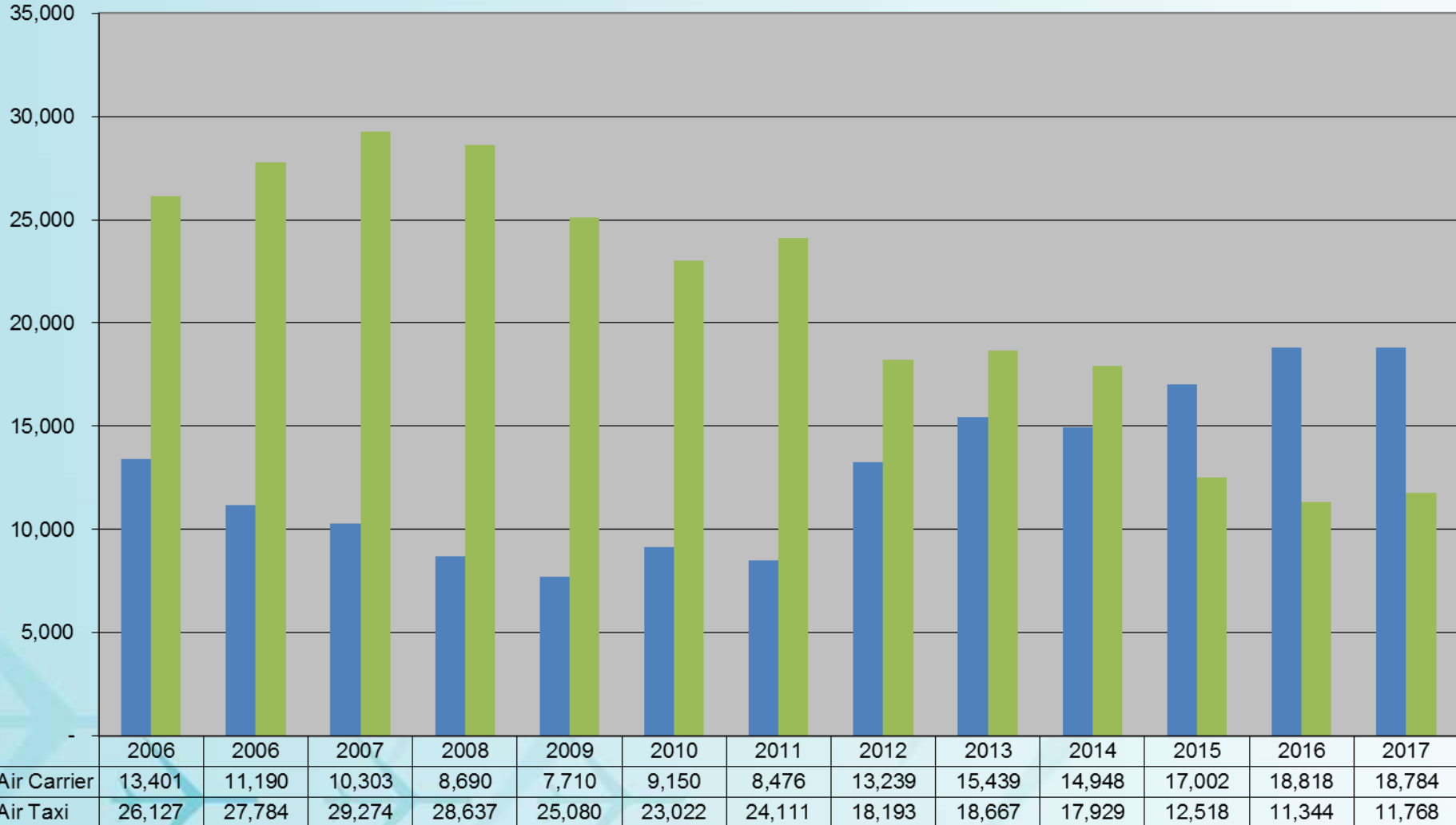
Annual Aircraft Operations



Historical Aircraft Operations by Type

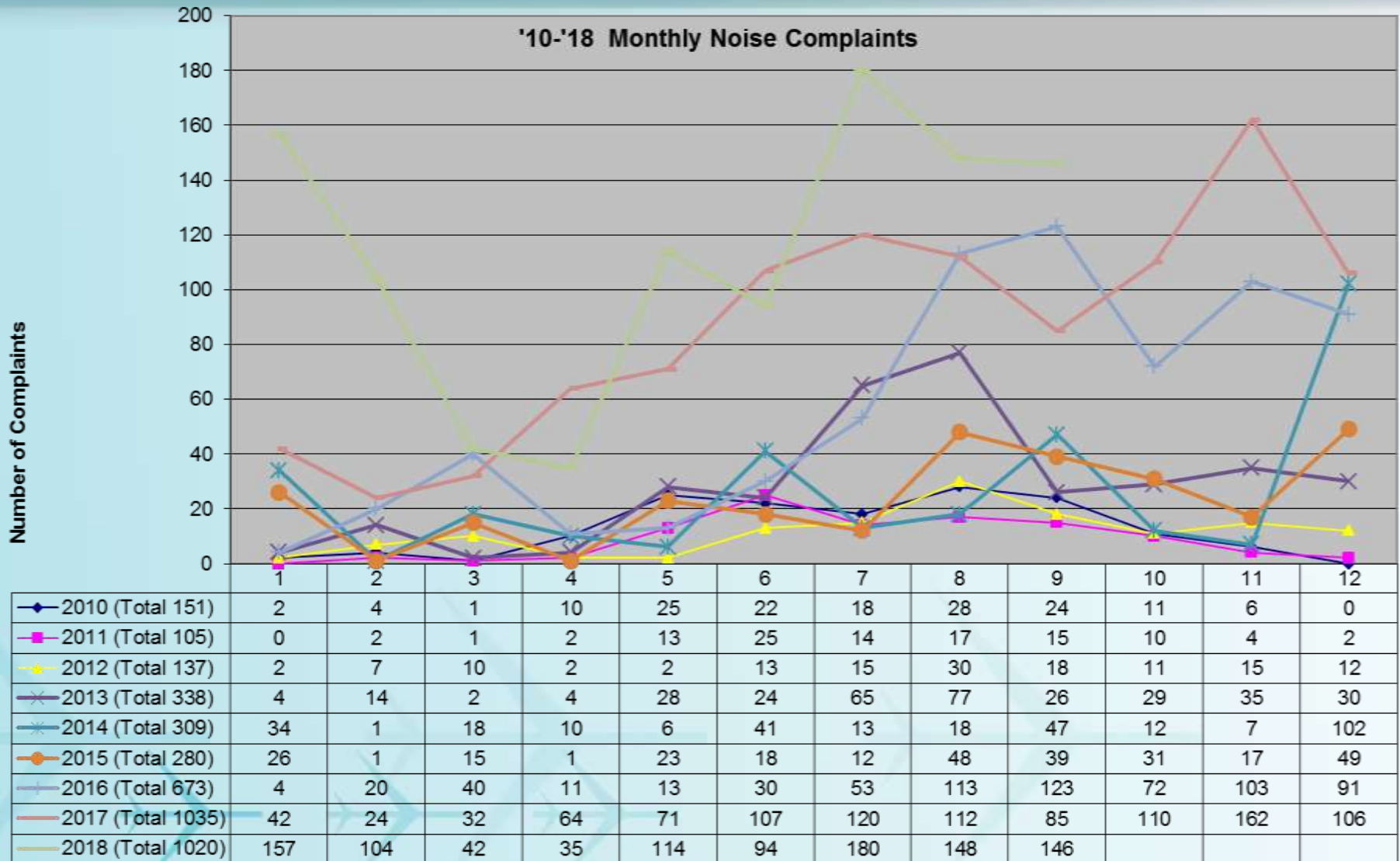


Air Carrier (A-320, B717) vs Air Taxi (CRJ, ERJ)



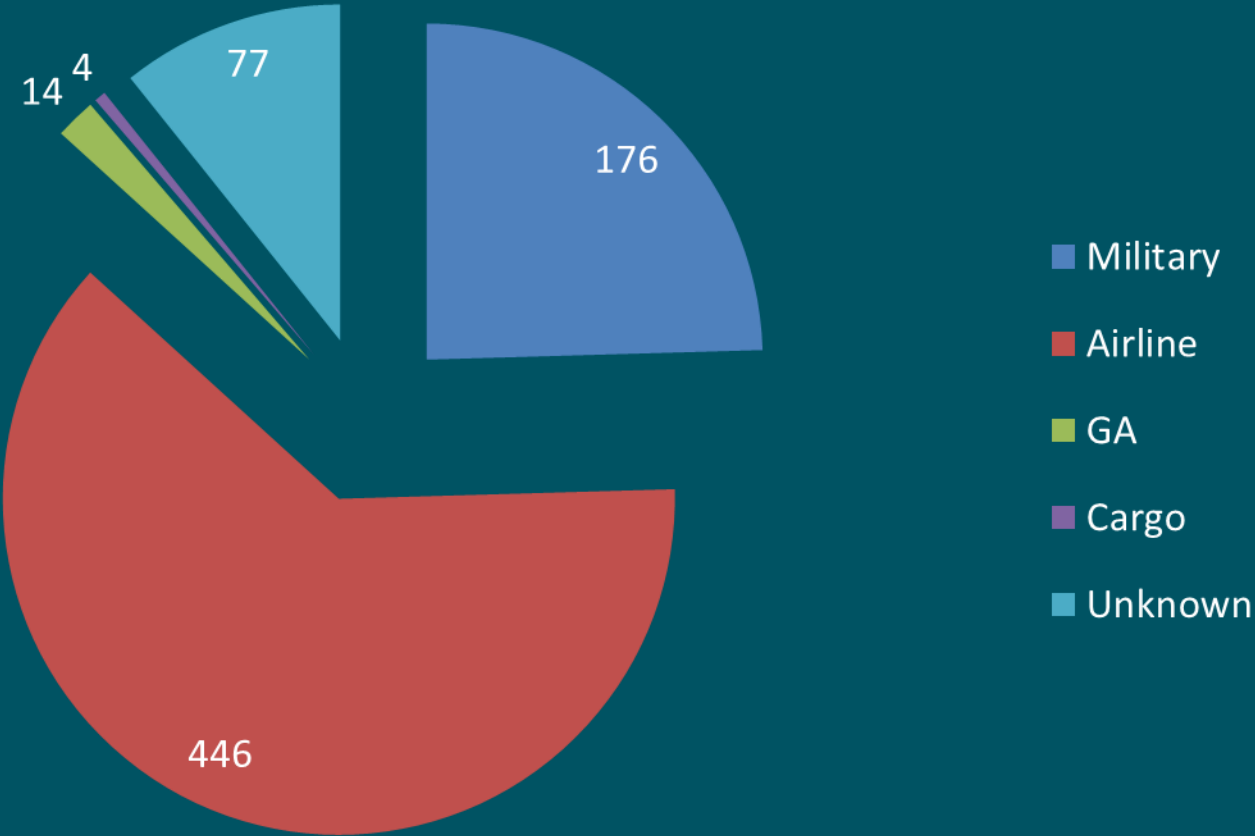
COMPLAINTS MONTHLY HISTORY

APR 18 – SEP 18



COMPLAINTS BY AIRCRAFT TYPE

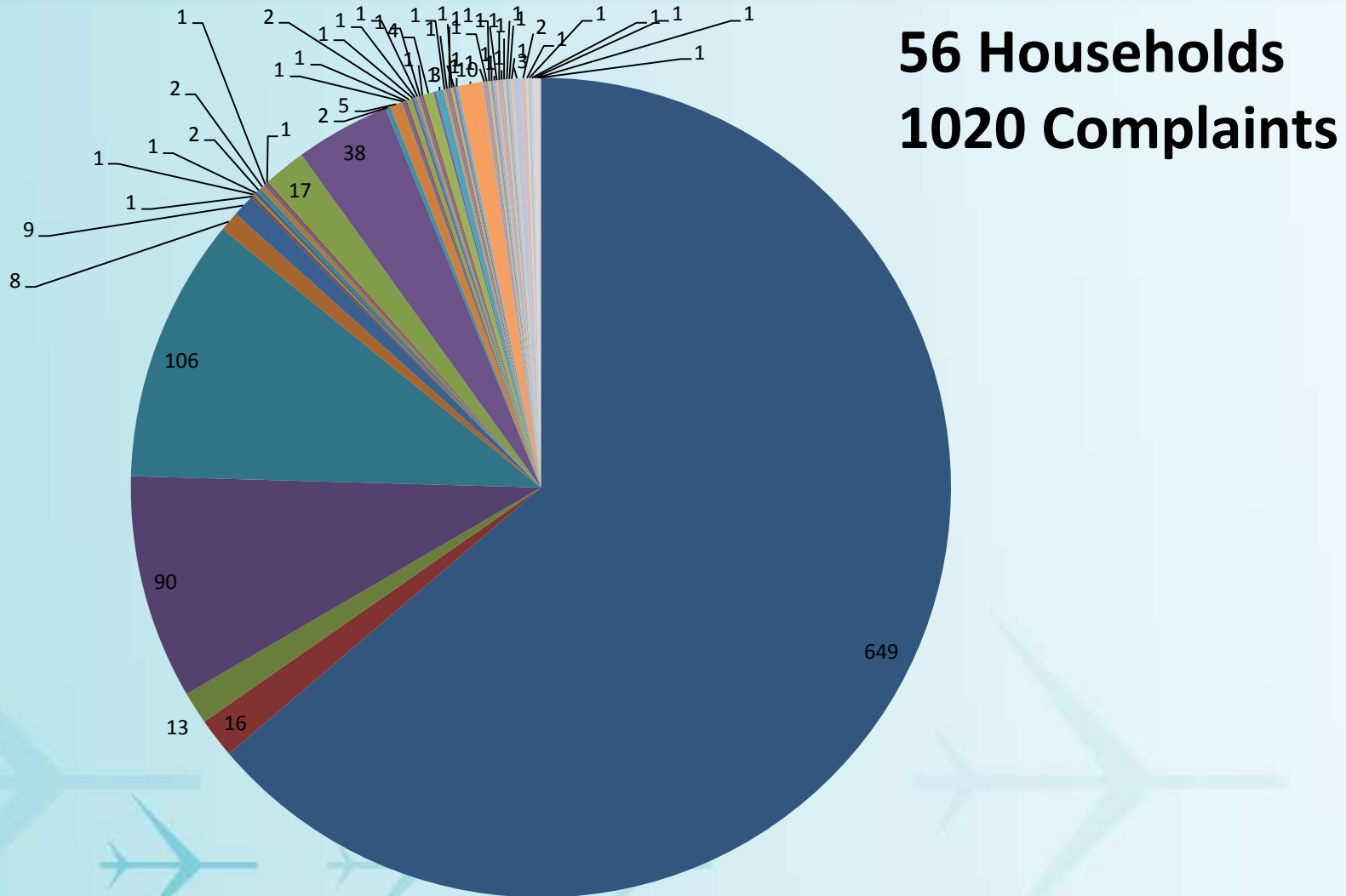
APR 18 – SEP 18



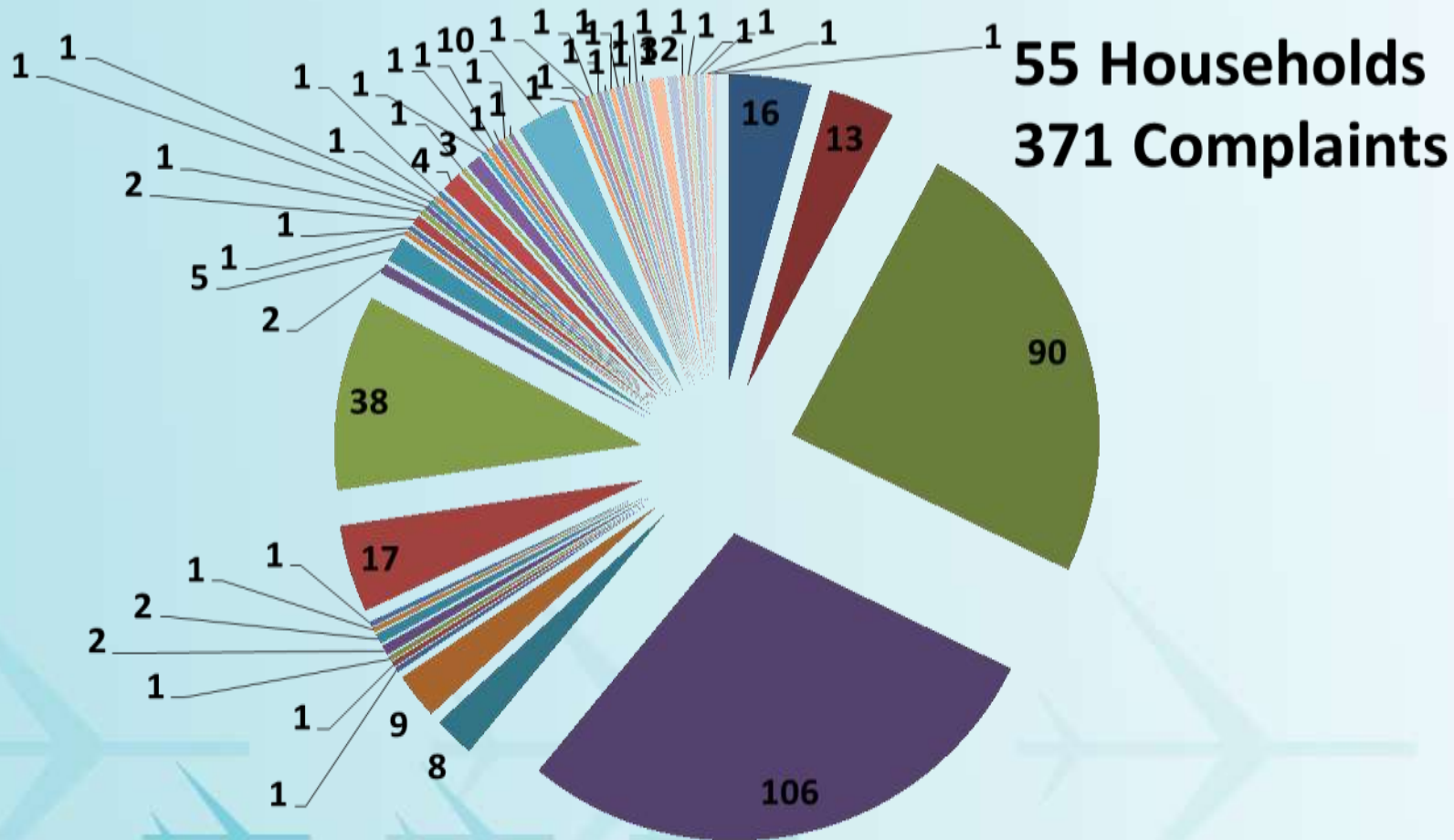
COMPLAINTS BY AREA

Area	APR 17 - SEP 17		APR 18 - SEP 18	
	Complaints	Households	Complaints	Households
<i>Blooming Grove</i>	0	0	0	0
<i>Burke</i>	0	0	0	0
<i>Deerfield</i>	0	0	0	0
<i>DeForest</i>	268	1	406	1
<i>Fitchburg</i>	0	0	0	0
<i>Madison</i>	253	42	299	52
<i>Marshall</i>	37	1	0	0
<i>Middleton</i>	0	0	0	0
<i>Monona</i>	0	0	0	0
<i>Sun Prairie</i>	0	0	12	1
<i>Windsor</i>	0	0	0	0
<i>Verona</i>	0	0	0	0
<i>Waunakee</i>	2	1	0	0
Total	560	45	717	54

COMPLAINTS PER HOUSEHOLD, 2018

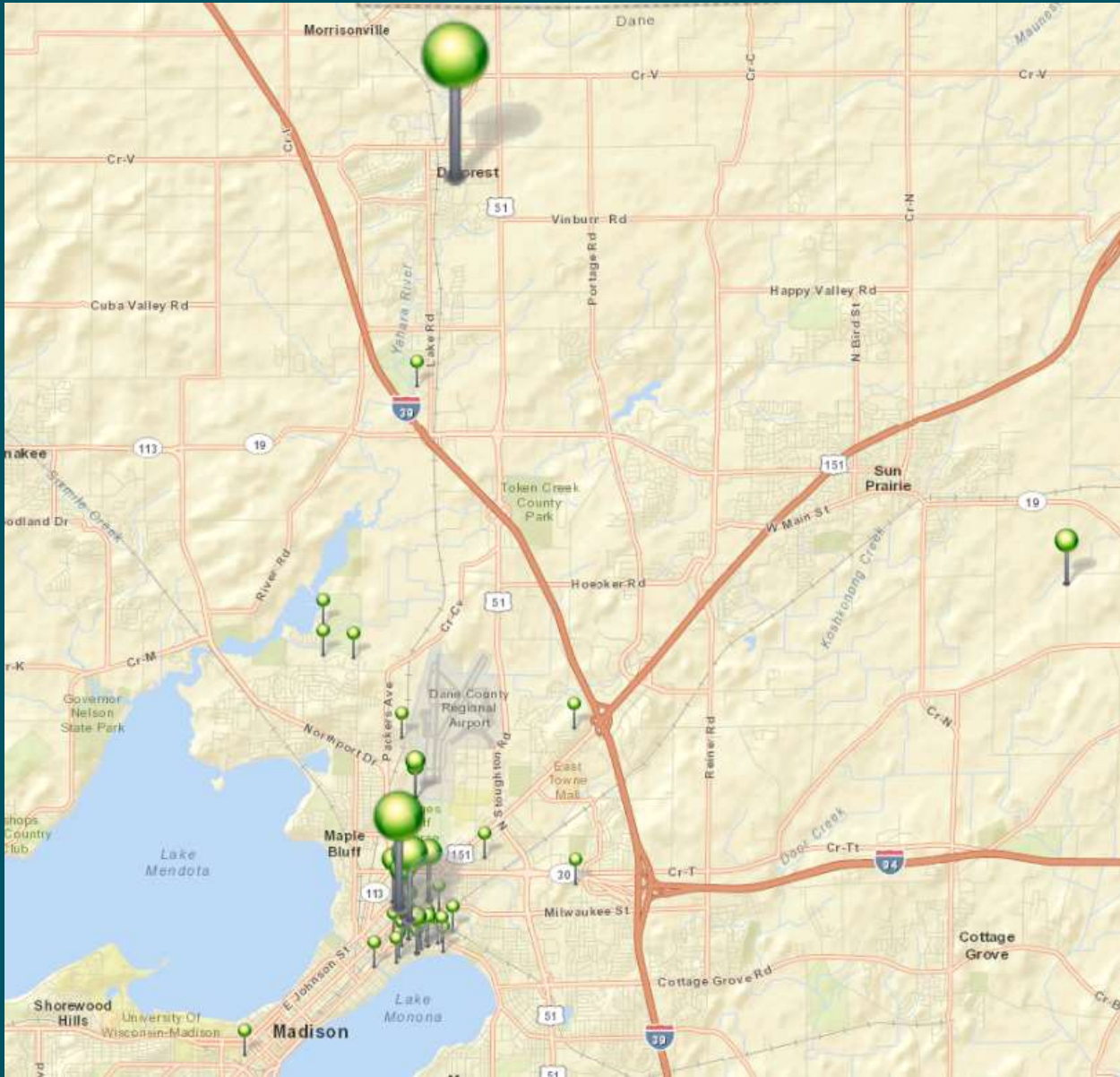


NOISE COMPLAINTS W/O SINGLE PERSON, 2018



COMPLAINT LOCATIONS

APR 18 – SEP 18

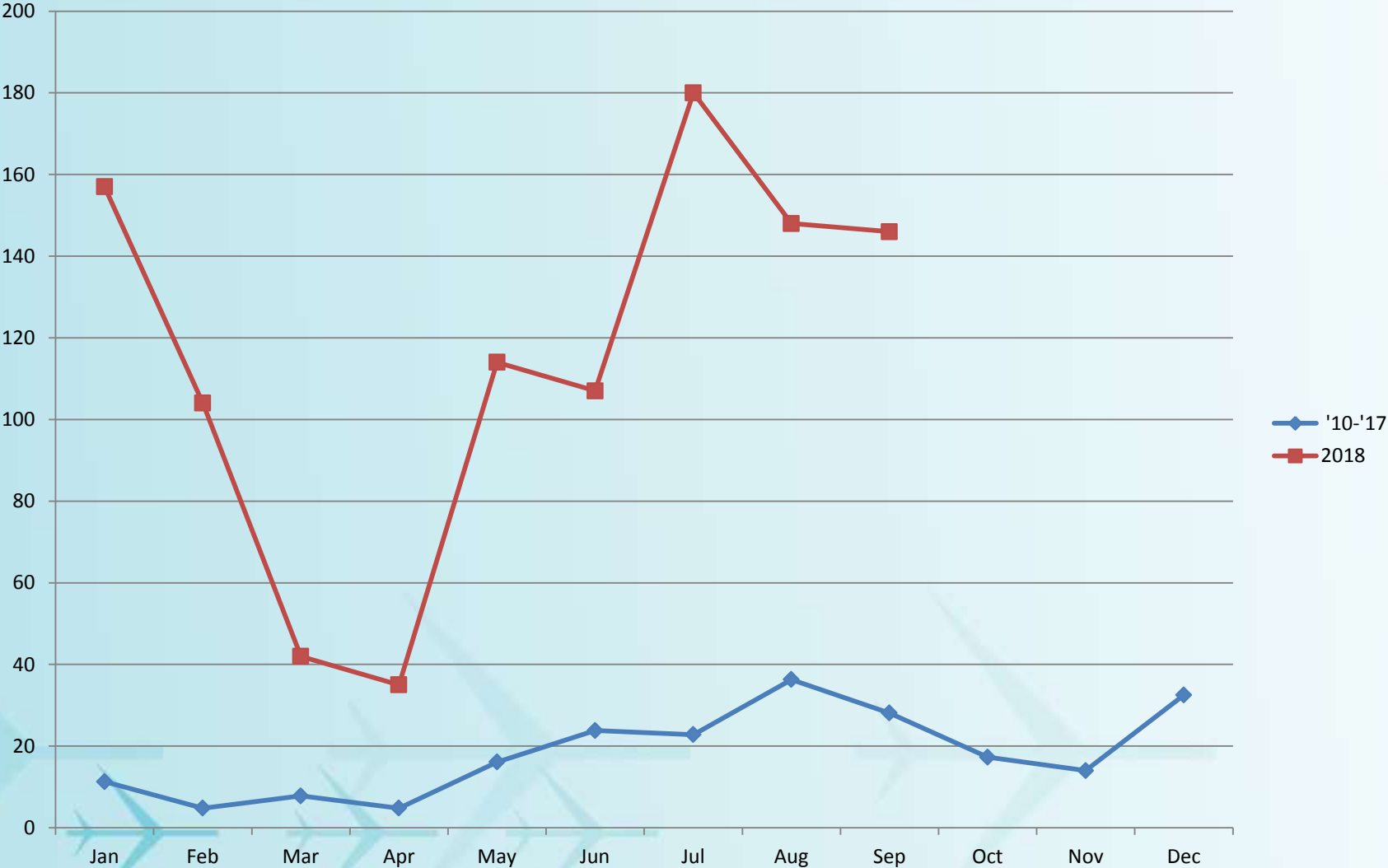


NOISE COMPLAINT CALLS

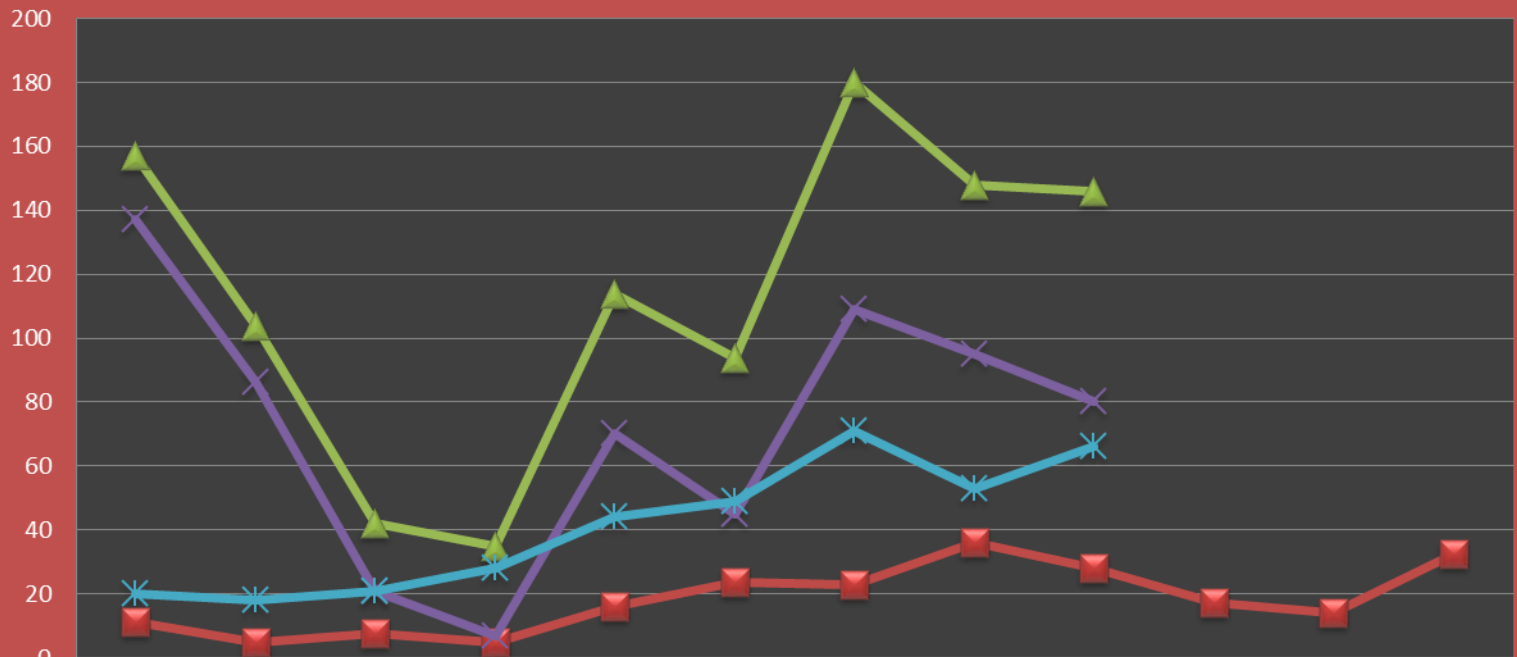
APR 18 – SEP 18

	APR	MAY	JUN	JUL	AUG	SEP	TOTAL
DAY	24	39	42	116	71	67	359
NIGHT	11	75	52	64	77	79	358
TOTAL	35	114	94	180	148	146	717

Noise Complaint History



Average Monthly Noise Complaints '10-'17 Average vs 2018 Complaints



	Jan	Feb	Mar	Apr	May	Jun	Jul	Aug	Sep	Oct	Nov	Dec
■ Avg '10-'17	11.3	4.8	7.8	4.8	16.1	23.8	22.8	36.3	28.1	17.3	14	32.5
▲ 2018	157	104	42	35	114	94	180	148	146			
× Single Person	137	86	21	7	70	45	109	95	80			
* Rest	20	18	21	28	44	49	71	53	66			

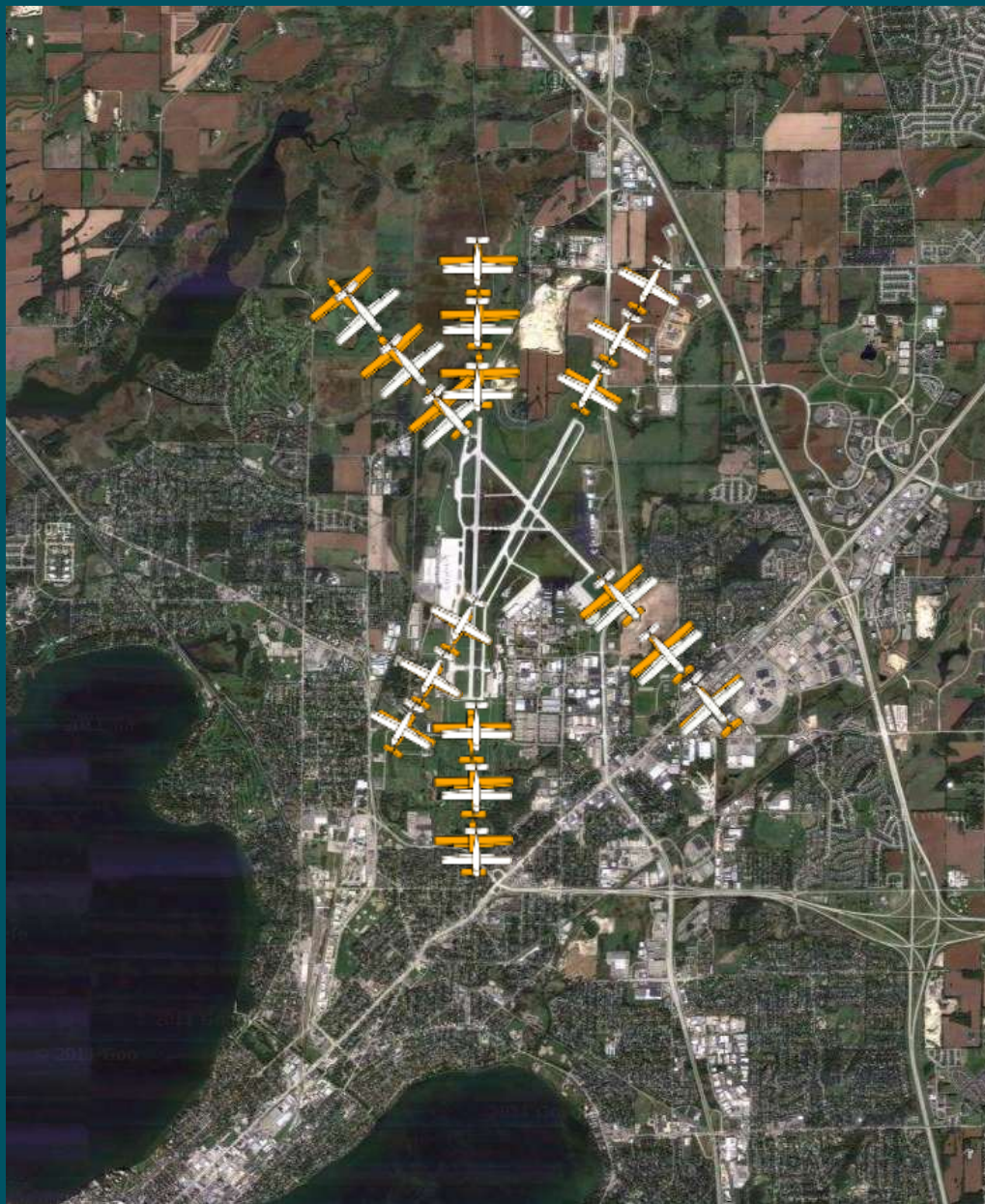
COMPLAINT HISTORY

APR 18 – SEP 18

	1	2	3	4	5	6	7	8	9	10	11	12	13	14	15	16	17	18	19	20	21	22	23	24	25	26	27	28	29	30	31
APR				M	MM M	MM M	MM MM M			M M		M M					M		MM				MM	M M M	M M	M	A				
MAY	U U	C U U U	U	U U M M M	MM MM MM M			M M C	M M M M M	M							M M M M U					M M M		M A					U	M U	
JUN	M U U	M M M U U	G		AU MM							G M U U	M M U U	A A A				U	UU MM M	U U G G	M U U	M U					M	U	U		
JUL			U U U U M M		MM	M	U		U U	M	M	U			M	M M M U	C U M M M M M M M	M M M U	MM MU UU		U	M M M U H	MM MM MM MM UU U	M M	M M M M U U	U U	U			M M M M	
AUG	M U			M	M	A	UM		M	M			A U	M M M M M	A M M M U U	M M U	M M U	M		M M	M U A	U U M A	AU UU U	M		M		A M U	A U U	U U M	
SEP							MM MM UU UU UU UU				A	U				M M M UU AA AA			MM UU AA G	M M M A A		A A A G G	AA AA G	M M A A U	M A A	C U A A G G G G	U M	A G		A	

A = Airline; G = General Aviation; M = Military Fixed Wing; U = Unknown; C = Cargo

WIND CONDITIONS SUMMARY



- WINDS FROM THE SOUTH
THAT ARE GREATER THAN THE KNOTS

- VISIBILITY GREATER THAN 3 MILES

- RUNWAY CONDITION IS DRY

- PILOT COMPLIES WITH VOLUNTARY CONTRA FLOW OPERATION

Wisconsin Wind Data*

*National Weather Service

Month	Prevailing Wind	Greater than 5 kts
Jan	WNW – 11.5	94.0%
Feb	WNW – 12	93.4%
Mar	NW – 13	93.9%
Apr	S – 11.4	93.6%
May	S – 10.4	93.0%
Jun	S – 9.7	91.6%
Jul	S – 9.2	90.1%
Aug	S – 9.1	88.9%
Sep	S – 9.8	90.1%
Oct	S – 10.4	92.2%
Nov	S – 10.7	94.3%
Dec	WNW – 12.4	94.0%
Annual	S – 12.4	92.4%

NOISE ABATEMENT COMPLIANCE AUDIT

WEATHER / RUNWAY DATA	
WINDS AT 5 KNOTS OR HIGHER ¹	79.88%
VISIBILITY AT 5 STATUTE MILES OR LESS	3.21%
RUNWAYS CLOSED ²	18/36 = 255 3/21 = 688 14/32 = 1080
¹ – Based on METAR weather observations at the time of recorded aircraft operations. ² – Runway closures primarily due to runway maintenance	

NOISE ABATEMENT COMPLIANCE AUDIT

RUNWAY USE

Aircraft observed departing to the North	45.96%
Aircraft observed arriving from the North	62.34%
Aircraft observed departing to the South	66.88%
Aircraft observed arriving from the South	44.27%

PASSUR FLIGHT TRACKING

2,256 operations recorded by Passur flight monitoring system

257 Passur observations of departures to the north and arrivals from the north when conditions allow for implementation of Noise Abatement Procedures

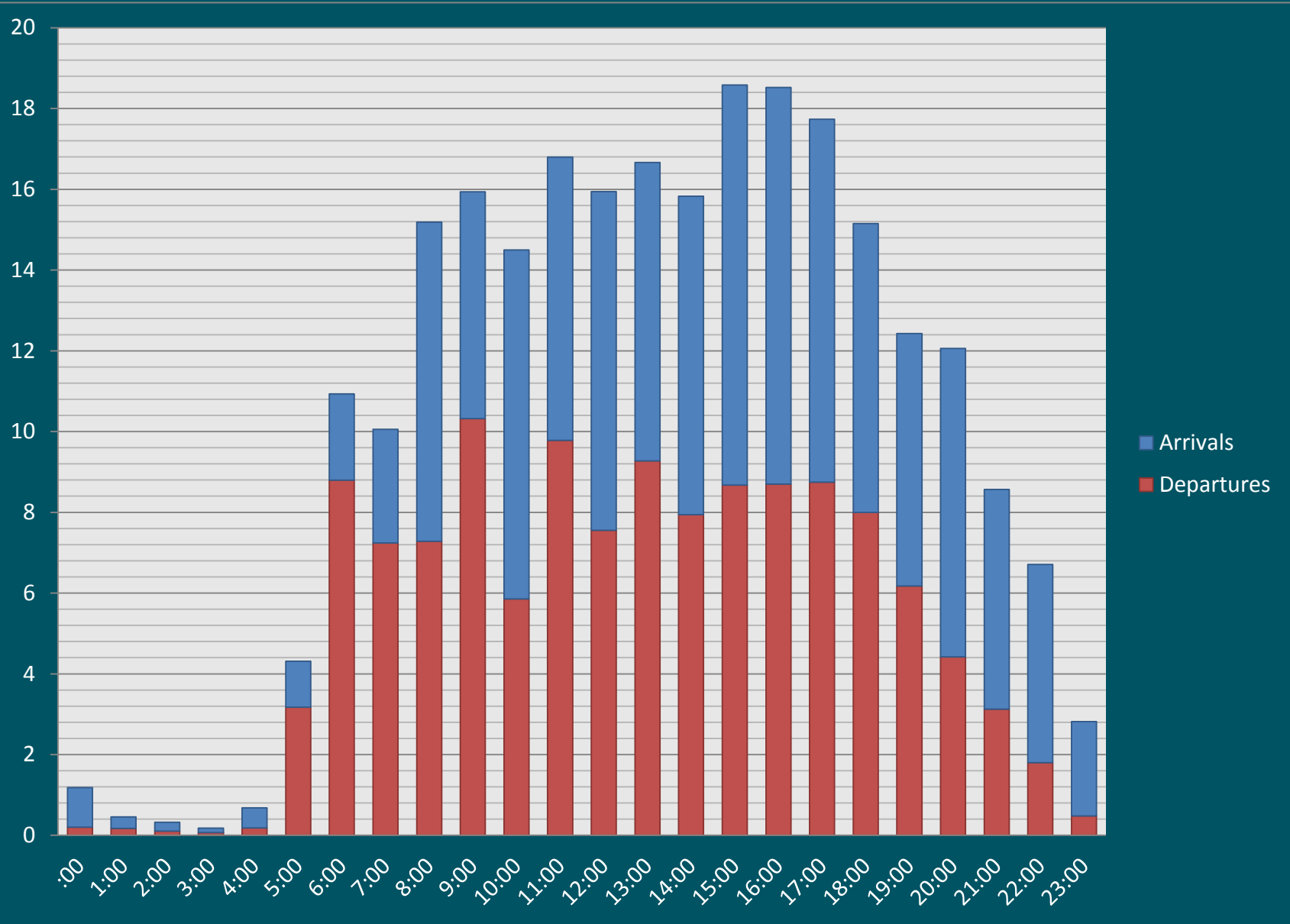
NOISE ABATEMENT COMPLIANCE AUDIT

**** With 100% compliance of Noise Abatement Procedures, there are times aircraft are required depart to the south and arrive from the south. ****

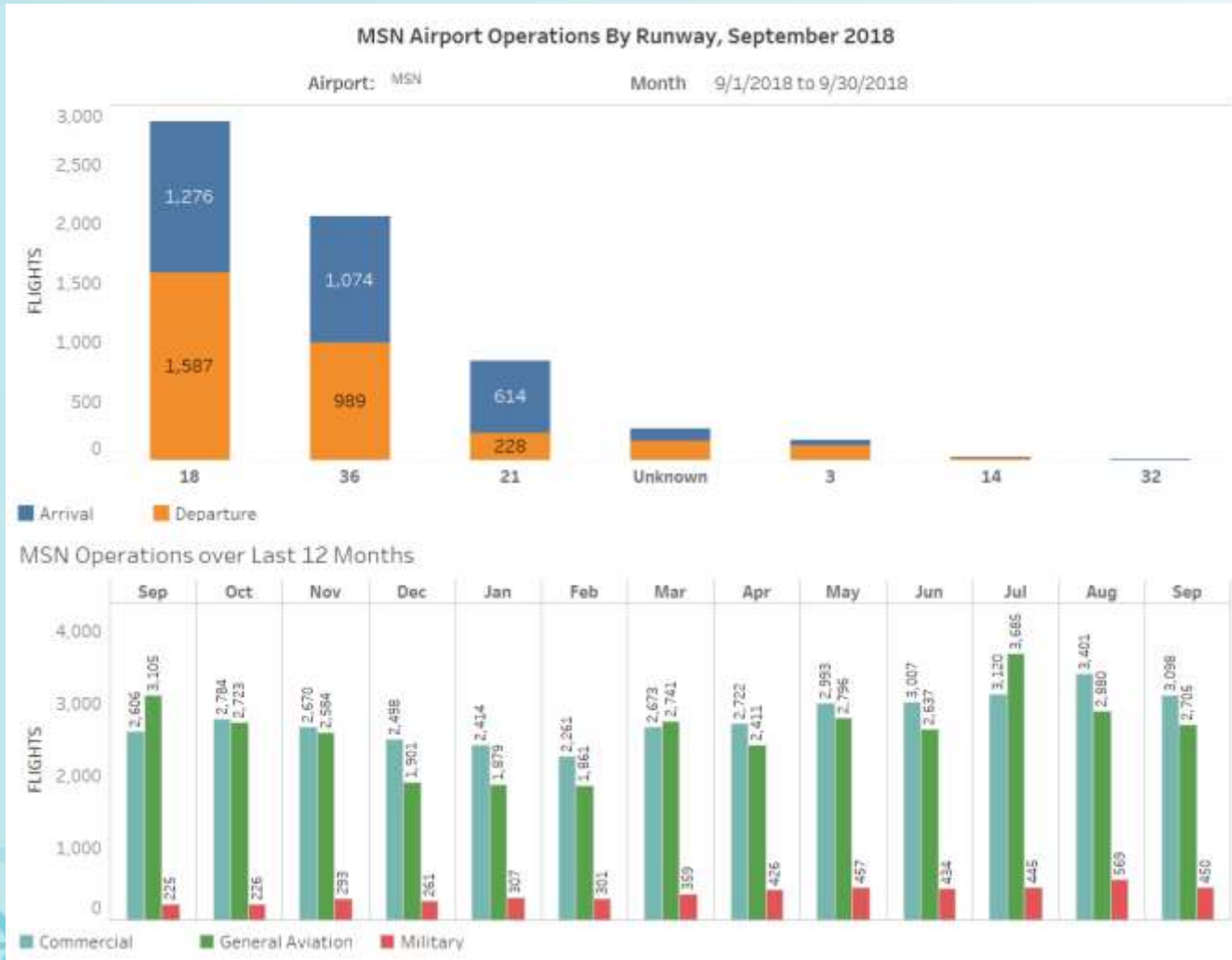
RUNWAY USE FACTORS			
	Wind	Visibility	Ceiling
South Departure	66.94%	5.20%	0.05%
South Arrival	68.37%	4.11%	12.58%

**** Safety, traffic, airline requirements, and weather are all components which are factored into a pilot's decision when landing and taking off. ****

AVERAGE HOURLY OPERATIONS



MSN ATCT TRAFFIC INFORMATION



NOISE ABATEMENT SUBCOMMITTEE

Recent Initiatives

- New “Arrival/Departure” dropdown on the Airport’s Noise Report Form
- Communicate with ANG, Army Guard and FAA to reduce and prevent transient military flight training operations
- Provide a proactive forum (front page of the Airport’s website) to report airfield construction which may result in a temporary shift of flight paths for aircraft arrivals and departures

CONTACT INFORMATION

24 Hour Aircraft Noise Line: **246-5841**

Online Form: <http://www.msnaairport.com/community/noise.aspx>

Madison Automated Weather: **249-0615**

DANE COUNTY
REGIONAL AIRPORT
MADISON



Questions?

It's all about the journey.